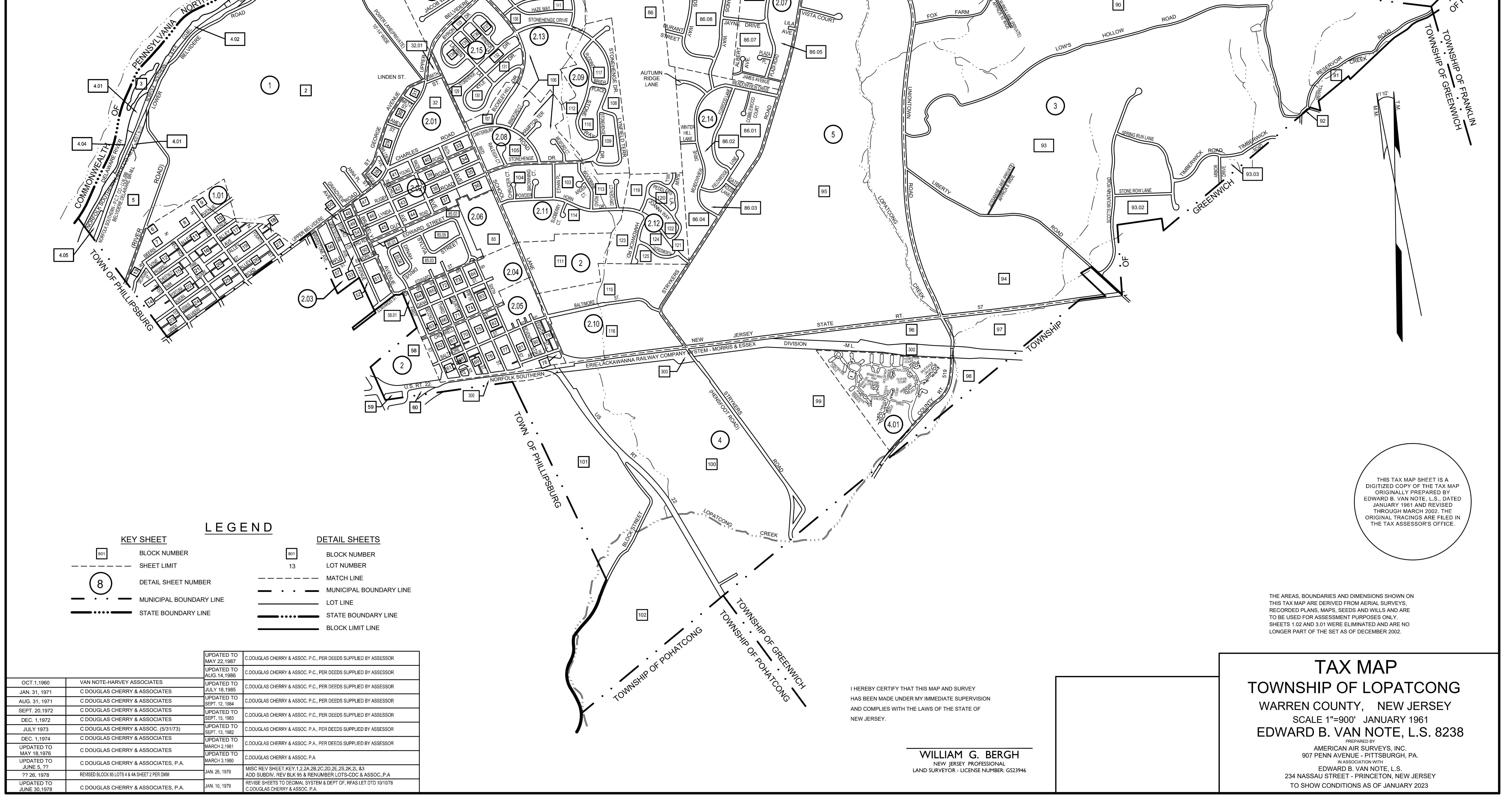


REVISIONS			04/2007	WILLIAM G. BERGH, P.L.S.	23946
DATE	NAME	LIC. NO.	07/2008	WILLIAM G. BERGH, P.L.S.	23946
6/13/88	ANTHONY C. CANGER	15099	02/2012	WILLIAM G. BERGH, P.L.S.	GS23946
10/30/88	ANTHONY C. CANGER	15099	07/2014	WILLIAM G. BERGH, P.L.S.	GS23946
8/18/89	ANTHONY C. CANGER	15099	04/2015	WILLIAM G. BERGH, P.L.S.	GS23946
10/5/90	ANTHONY C. CANGER	15099	05/2022	WILLIAM G. BERGH, P.L.S.	GS23946
5/29/91	ANTHONY C. CANGER	15099	01/2023	WILLIAM G. BERGH, P.L.S.	GS23946
2/22/94	ANTHONY C. CANGER	15099			
1/5/95	ANTHONY C. CANGER	15099			
12/95	KENNETH D. DYKSTRA	32972			
3/97	KENNETH D. DYKSTRA	32972			
7/97	J. JOHN P. MORRISON	34689			
1/98	JOHN P. MORRISON	34689			
12/98	JOHN P. MORRISON	34689			
03/1999	TONY M. GANGUZZA	3834			
1/2000	GLEN LLOYD	37598			
12/2001	MICHAEL ANGELENE	14156			
03/2002	MICHAEL ANGELENE	14156			
12/2002	LEONARDO E. PONZIO	39402			
06/2003	LEONARDO E. PONZIO	39402			
07/2003	LEONARDO E. PONZIO	39402			
11/2003	LEONARDO E. PONZIO	39402			
09/2004	JOHN J. HANLON, P.L.S.	37589			
01/2005	JOHN J. HANLON, P.L.S.	37589			
02/2005	JOHN J. HANLON, P.L.S.	37589			



KEY SHEET		LEGEND		DETAIL SHEETS	
	BLOCK NUMBER		LOT NUMBER		MATCH LINE
	SHEET LIMIT		MUNICIPAL BOUNDARY LINE		LOT LINE
	DETAIL SHEET NUMBER		STATE BOUNDARY LINE		BLOCK LIMIT LINE
	MUNICIPAL BOUNDARY LINE				
	STATE BOUNDARY LINE				

OCT. 1, 1980	VAN NOTE-HARVEY ASSOCIATES	UPDATED TO MAY 22, 1987	C.DOUGLAS CHERRY & ASSOC. P.C., PER DEEDS SUPPLIED BY ASSESSOR
JAN. 31, 1971	C DOUGLAS CHERRY & ASSOCIATES	UPDATED TO AUG. 14, 1986	C.DOUGLAS CHERRY & ASSOC. P.C., PER DEEDS SUPPLIED BY ASSESSOR
AUG. 31, 1971	C DOUGLAS CHERRY & ASSOCIATES	UPDATED TO JULY 18, 1985	C.DOUGLAS CHERRY & ASSOC. P.C., PER DEEDS SUPPLIED BY ASSESSOR
SEPT. 20, 1972	C DOUGLAS CHERRY & ASSOCIATES	UPDATED TO SEPT. 12, 1984	C.DOUGLAS CHERRY & ASSOC. P.C., PER DEEDS SUPPLIED BY ASSESSOR
DEC. 1, 1972	C DOUGLAS CHERRY & ASSOCIATES	UPDATED TO SEPT. 5, 1983	C.DOUGLAS CHERRY & ASSOC. P.C., PER DEEDS SUPPLIED BY ASSESSOR
JULY 1973	C DOUGLAS CHERRY & ASSOC. (5/31/73)	UPDATED TO SEPT. 13, 1982	C.DOUGLAS CHERRY & ASSOC. P.C., PER DEEDS SUPPLIED BY ASSESSOR
DEC. 1, 1974	C DOUGLAS CHERRY & ASSOCIATES	UPDATED TO MARCH 2, 1981	C.DOUGLAS CHERRY & ASSOC. P.A., PER DEEDS SUPPLIED BY ASSESSOR
UPDATED TO MAY 18, 1976	C DOUGLAS CHERRY & ASSOCIATES	UPDATED TO MARCH 3, 1980	C.DOUGLAS CHERRY & ASSOC. P.A.
UPDATED TO JUNE 5, ??	C DOUGLAS CHERRY & ASSOCIATES, P.A.		
?? 26, 1978	REVISED BLOCK 8, LOTS 4 & 4A SHEET 2 PER DMM	JAN. 26, 1979	MISC REV SHEET KEY 1.2.2A, 2B, 2C, 2D, 2E, 2S, 2K, 2L, A3 ADD SUBDIV. REV BLK 95 & RENUMBER LOTS-CDC & ASSOC. P.A
UPDATED TO JUNE 30, 1978	C DOUGLAS CHERRY & ASSOCIATES, P.A.	JAN. 10, 1979	REVISE SHEETS TO DECIMAL SYSTEM & DEPT OF RFAS LET DTD 10/10/78 C.DOUGLAS CHERRY & ASSOC. P.A.

THIS TAX MAP SHEET IS A DIGITIZED COPY OF THE TAX MAP ORIGINALLY PREPARED BY EDWARD B. VAN NOTE, L.S., DATED JANUARY 1961 AND REVISED THROUGH MARCH 2002. THE ORIGINAL TRACINGS ARE FILED IN THE TAX ASSESSOR'S OFFICE.

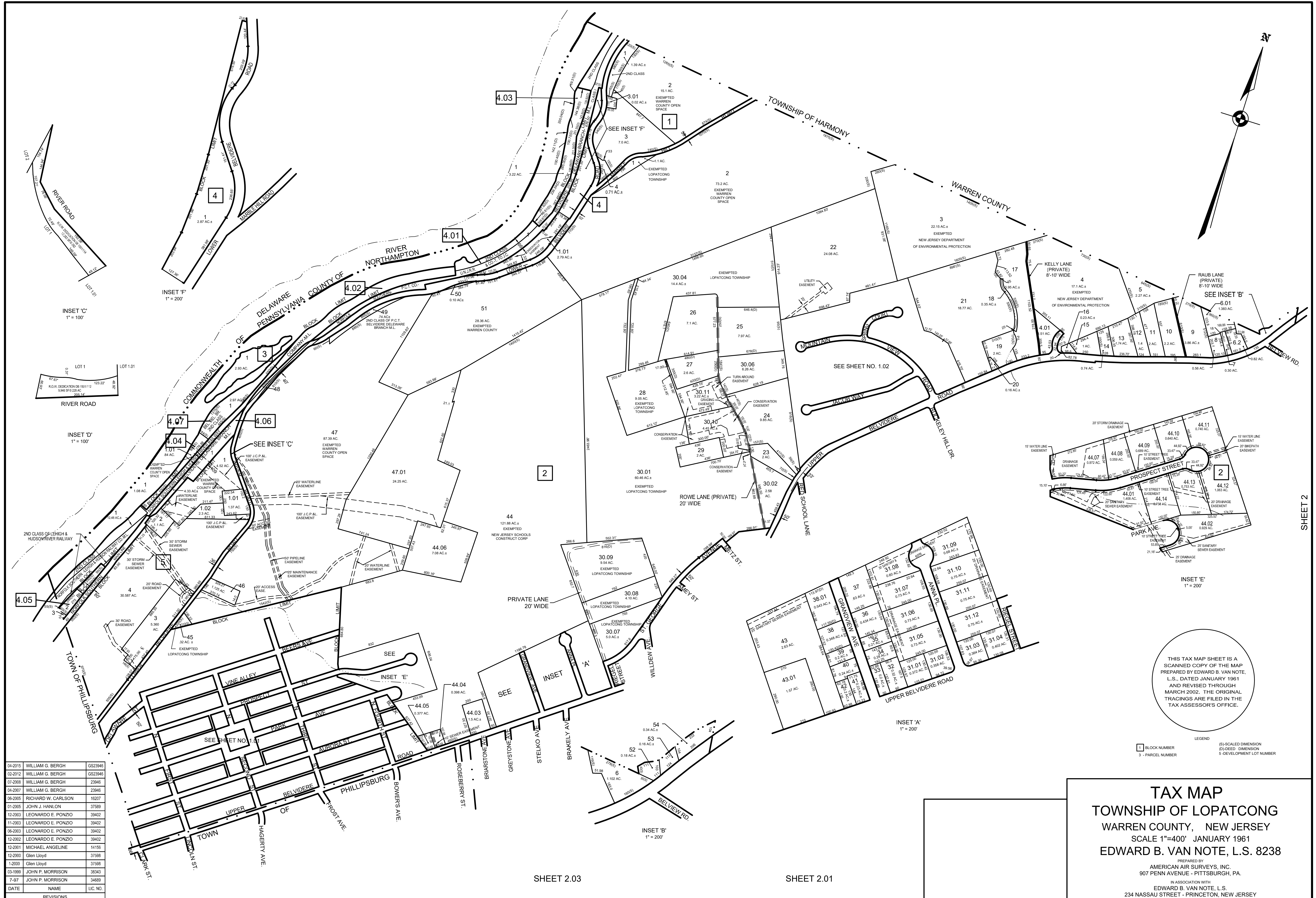
THE AREAS, BOUNDARIES AND DIMENSIONS SHOWN ON THIS TAX MAP ARE DERIVED FROM AERIAL SURVEYS, RECORDED PLANS, MAPS, SEEDS AND WILLS AND ARE TO BE USED FOR ASSESSMENT PURPOSES ONLY. SHEETS 1.02 AND 3.01 WERE ELIMINATED AND ARE NO LONGER PART OF THE SET AS OF DECEMBER 2002.

I HEREBY CERTIFY THAT THIS MAP AND SURVEY HAS BEEN MADE UNDER MY IMMEDIATE SUPERVISION AND COMPLIES WITH THE LAWS OF THE STATE OF NEW JERSEY.

WILLIAM G. BERGH
NEW JERSEY PROFESSIONAL
LAND SURVEYOR - LICENSE NUMBER: GS23946

TAX MAP
TOWNSHIP OF LOPATCONG
WARREN COUNTY, NEW JERSEY
SCALE 1"=900' JANUARY 1961
EDWARD B. VAN NOTE, L.S. 8238

PREPARED BY
AMERICAN AIR SURVEYS, INC.
907 PENN AVENUE - PITTSBURGH, PA.
IN ASSOCIATION WITH
EDWARD B. VAN NOTE, L.S.
234 NASSAU STREET - PRINCETON, NEW JERSEY
TO SHOW CONDITIONS AS OF JANUARY 2023



DATE	NAME	LIC. NO.
04-2015	WILLIAM G. BERGH	GS23946
02-2012	WILLIAM G. BERGH	GS23946
07-2008	WILLIAM G. BERGH	23946
04-2007	WILLIAM G. BERGH	23946
06-2005	RICHARD W. CARLSON	16207
01-2005	JOHN J. HANLON	37589
12-2003	LEONARDO E. PONZIO	39402
11-2003	LEONARDO E. PONZIO	39402
06-2003	LEONARDO E. PONZIO	39402
12-2002	LEONARDO E. PONZIO	39402
12-2001	MICHAEL ANGELINE	14155
12-2000	Glen Lloyd	37588
1-2000	Glen Lloyd	37588
03-1999	JOHN P. MORRISON	36343
7-97	JOHN P. MORRISON	34689
DATE	NAME	LIC. NO.
REVISIONS		

THIS TAX MAP SHEET IS A SCANNED COPY OF THE MAP PREPARED BY EDWARD B. VAN NOTE, L.S., DATED JANUARY 1961 AND REVISED THROUGH MARCH 2002. THE ORIGINAL TRACINGS ARE FILED IN THE TAX ASSESSOR'S OFFICE.

LEGEND
 [] BLOCK NUMBER
 3 - PARCEL NUMBER
 (S)-SCALED DIMENSION
 (D)-DEED DIMENSION
 5-DEVELOPMENT LOT NUMBER

TAX MAP
TOWNSHIP OF LOPATCONG
 WARREN COUNTY, NEW JERSEY
 SCALE 1"=400' JANUARY 1961
 EDWARD B. VAN NOTE, L.S. 8238

PREPARED BY
 AMERICAN AIR SURVEYS, INC.
 907 PENN AVENUE - PITTSBURGH, PA.

IN ASSOCIATION WITH
 EDWARD B. VAN NOTE, L.S.
 234 NASSAU STREET - PRINCETON, NEW JERSEY

SHEET 2.03

SHEET 2.01

SHEET 2

REVISIONS		
DATE	NAME	LIC. NO.
7-97	LOHN P. MORRISON	34689
12-98	LOHN P. MORRISON	34689
12-2002	LEONARDO E. PONZIO	39402
06-2003	LEONARDO E. PONZIO	39402
11-2003	LEONARDO E. PONZIO	39402
03-2005	JOHN J. HANLON, P.L.S.	37589



TAX MAP
TOWNSHIP OF LOPATCONG
 WARREN COUNTY, NEW JERSEY
 SCALE 1"=100' JANUARY 1961
 EDWARD B. VAN NOTE, L.S. 8238

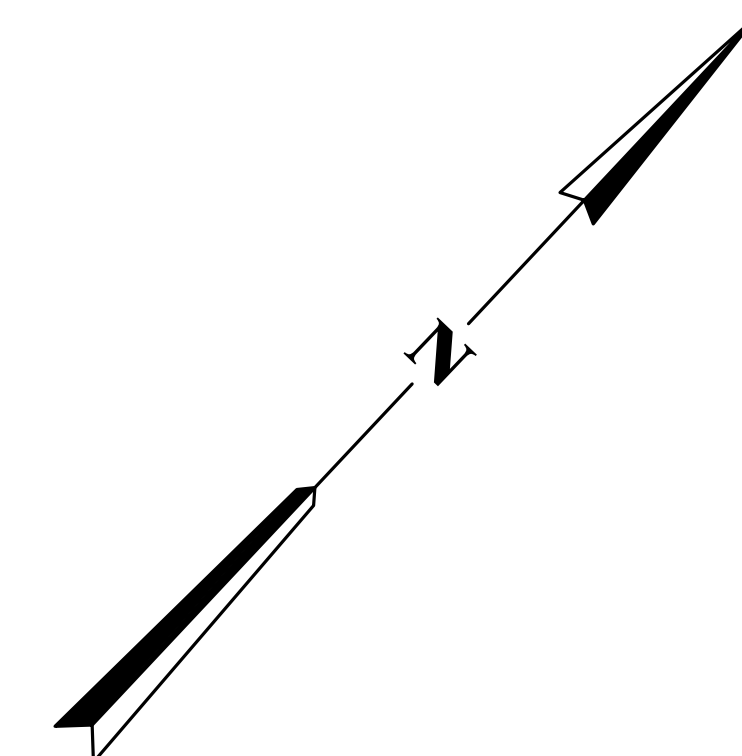
PREPARED BY
 AMERICAN AIR SURVEYS, INC.
 907 PENN AVENUE - PITTSBURGH, PA.

ASSOCIATION WITH
 EDWARD B. VAN NOTE, L.S.
 234 NASSAU STREET - PRINCETON, NEW JERSEY

THIS TAX MAP SHEET IS A DIGITIZED COPY OF THE TAX MAP ORIGINALLY PREPARED BY EDWARD B. VAN NOTE, L.S., DATED JANUARY 1961 AND REVISED THROUGH MARCH 2002. THE ORIGINAL TRACINGS ARE FILED IN THE TAX ASSESSOR'S OFFICE.

REVISIONS		
DATE	NAME	LIC. NO.

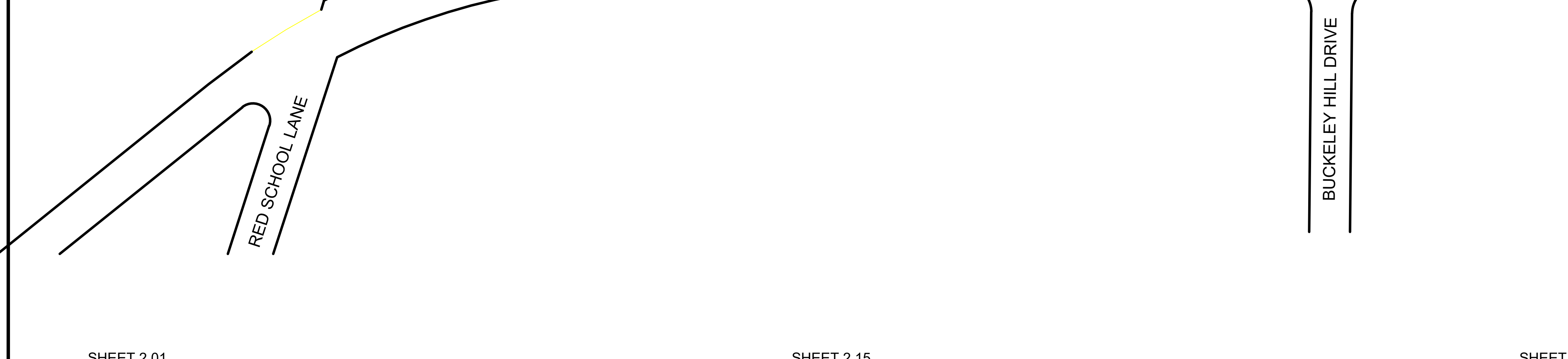
SHEET 1



SHEET 1

SHEET 1

LEGEND
 1 - BLOCK NUMBER
 3 - PARCEL NUMBER
 (S)-SCALED DIMENSION
 (D)-DEED DIMENSION
 (E)-DEVELOPMENT LOT NUMBER



SHEET 2.01

SHEET 2.15

SHEET 2.13

TAX MAP
 TOWNSHIP OF LOPATCONG
 WARREN COUNTY, NEW JERSEY
 SCALE 1"=100' APRIL 2007
 WILLIAM G. BERGH, P.L.S. 23946
 MASER CONSULTING P.A.
 53 FRONTAGE ROAD, SUITE 120, CLINTON, NJ 08809

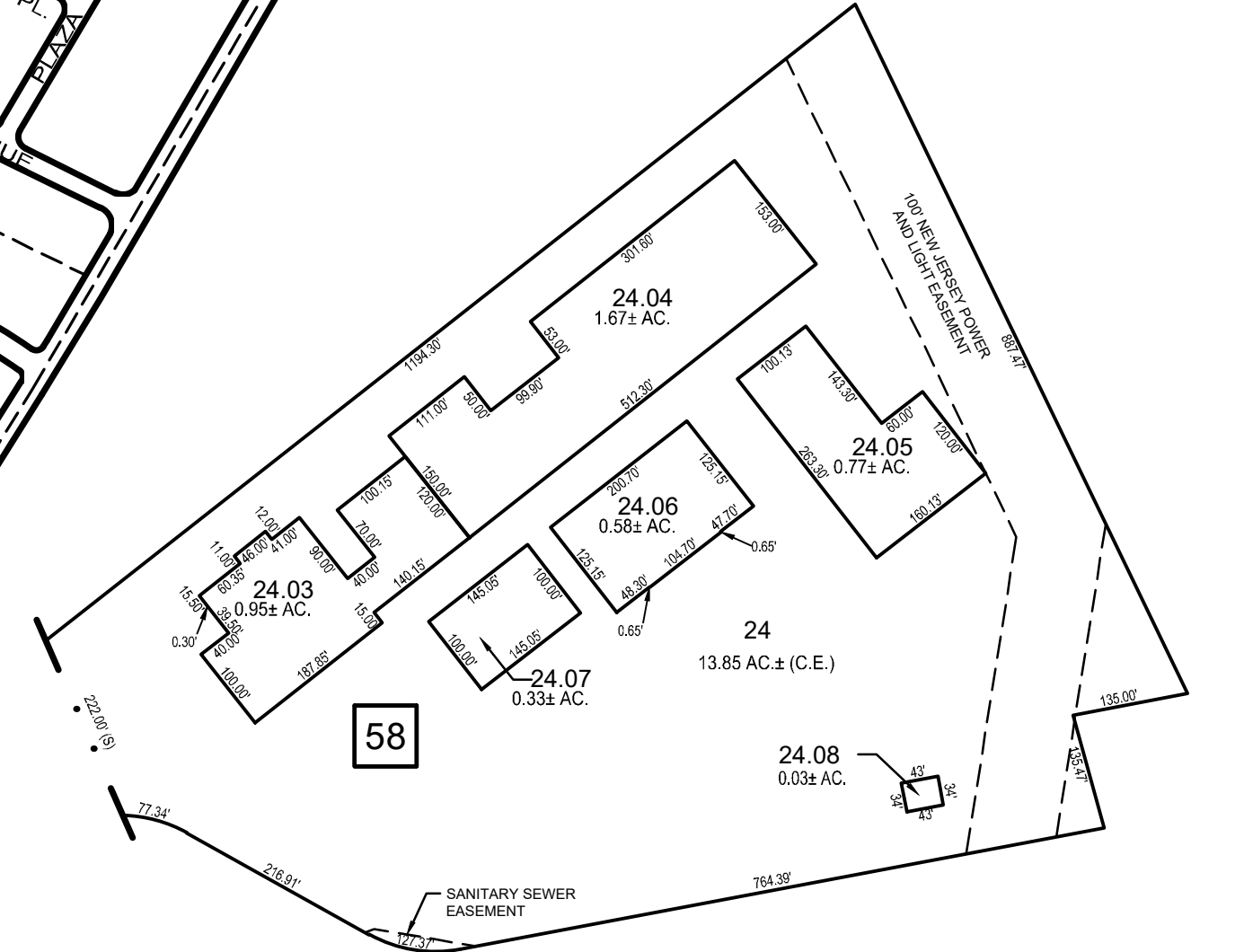
REVISIONS		
DATE	NAME	LIC. NO.
7-97	JOHN P. MORRISON	34689
1-98	JOHN P. MORRISON	34689
12-98	JOHN P. MORRISON	34689
1-00	GLEN LLOYD	37598
03-2002	MICHAEL ANGELINE	14156
12-2002	LEONARDO E. PONZIO	39402
06-2003	LEONARDO E. PONZIO	39402
11-2003	LEONARDO E. PONZIO	39402
01-2004	LEONARDO E. PONZIO	39402
06-2004	JOHN J. HANLON, P.L.S.	37589
01-2005	JOHN J. HANLON, P.L.S.	37589
07-2008	WILLIAM G. BERGH	23946

SHEET 1



SHEET 1

SHEET 5



INSET 'A'
1" = 200'

THIS TAX MAP SHEET IS A
SCANNED COPY OF THE MAP
PREPARED BY EDWARD B. VAN NOTE,
L.S., DATED JANUARY 1961
AND REVISED THROUGH
MARCH 2002. THE ORIGINAL
TRACINGS ARE FILED IN THE
TAX ASSESSOR'S OFFICE.

- NOTE:
- 1) BLOCK 116, LOT NUMBERS 3-22 NOT USED
LOT NUMBERS 23-39 FORMERLY IN BLOCK 86
 - 2) BLOCK 85, LOT NUMBERS 47-57 NOT USED
 - 3) BLOCK 85 01, LOT NUMBERS 5-37 NOT USED

LEGEND

□ BLOCK NUMBER
3 - PARCEL NUMBER

(S)-SCALED DIMENSION
(D)-FIELD DIMENSION
5-DEVELOPMENT LOT NUMBER

TAX MAP
TOWNSHIP OF LOPATCONG
 WARREN COUNTY, NEW JERSEY
 SCALE 1"=400' JANUARY 1961
 EDWARD B. VAN NOTE, L.S. 8238

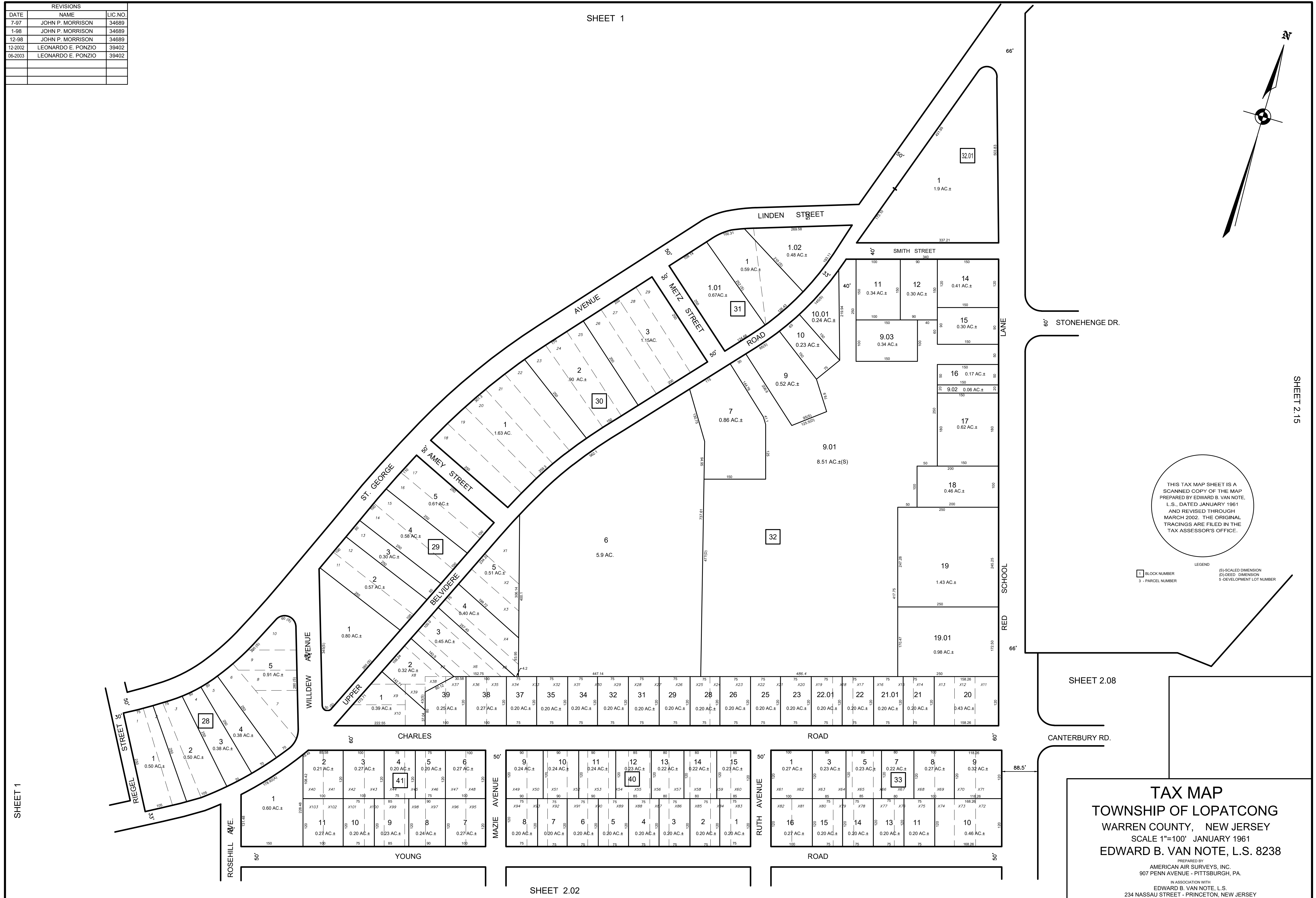
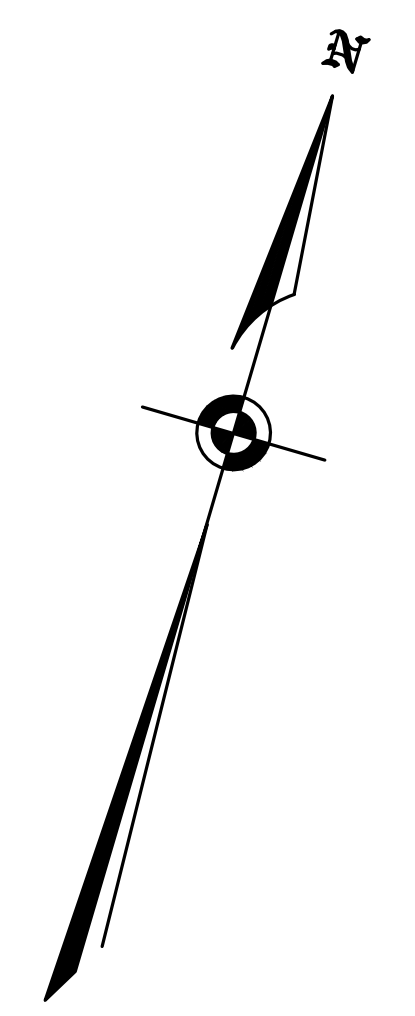
PREPARED BY
 AMERICAN AIR SURVEYS, INC.
 907 PENN AVENUE - PITTSBURGH, PA.

IN ASSOCIATION WITH
 EDWARD B. VAN NOTE, L.S.
 234 NASSAU STREET - PRINCETON, NEW JERSEY

SHEET 4

REVISIONS		
DATE	NAME	LIC. NO.
7-97	JOHN P. MORRISON	34689
1-98	JOHN P. MORRISON	34689
12-98	JOHN P. MORRISON	34689
12-2002	LEONARDO E. PONZIO	39402
06-2003	LEONARDO E. PONZIO	39402

SHEET 1



THIS TAX MAP SHEET IS A
 SCANNED COPY OF THE MAP
 PREPARED BY EDWARD B. VAN NOTE,
 L.S., DATED JANUARY 1961
 AND REVISED THROUGH
 MARCH 2002. THE ORIGINAL
 TRACINGS ARE FILED IN THE
 TAX ASSESSOR'S OFFICE.

LEGEND
 1 - BLOCK NUMBER
 3 - PARCEL NUMBER
 (S) - SCALED DIMENSION
 (D) - DRED DIMENSION
 2 - DEVELOPMENT LOT NUMBER

SHEET 2.08

CANTERBURY RD.

TAX MAP
TOWNSHIP OF LOPATCONG
 WARREN COUNTY, NEW JERSEY
 SCALE 1"=100' JANUARY 1961
 EDWARD B. VAN NOTE, L.S. 8238

PREPARED BY
 AMERICAN AIR SURVEYS, INC.
 907 PENN AVENUE - PITTSBURGH, PA.

IN ASSOCIATION WITH
 EDWARD B. VAN NOTE, L.S.
 234 NASSAU STREET - PRINCETON, NEW JERSEY

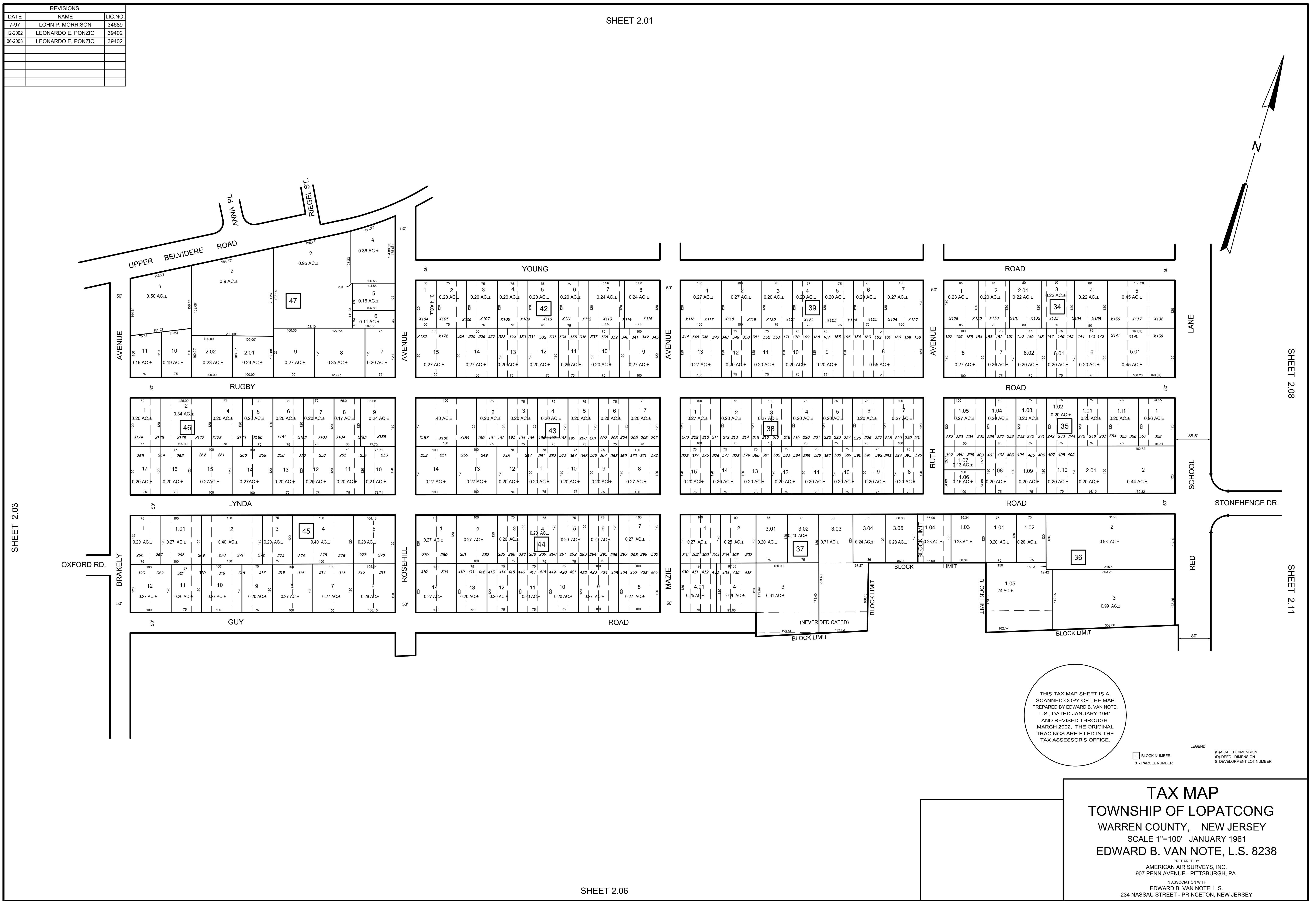
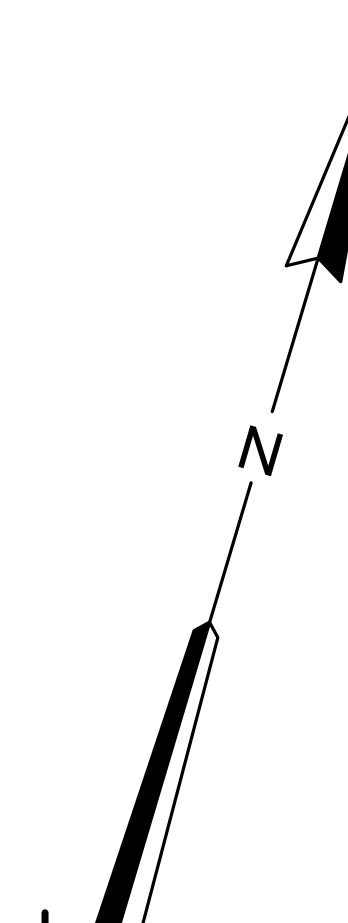
SHEET 2.02

SHEET 1

SHEET 2.15

REVISIONS		
DATE	NAME	LIC. NO.
7-97	LOHN P. MORRISON	34689
12-2002	LEONARDO E. PONZIO	39402
06-2003	LEONARDO E. PONZIO	39402

SHEET 2.01



SHEET 2.03

SHEET 2.08

SHEET 2.11

THIS TAX MAP SHEET IS A
 SCANNED COPY OF THE MAP
 PREPARED BY EDWARD B. VAN NOTE,
 L.S., DATED JANUARY 1961
 AND REVISED THROUGH
 MARCH 2002. THE ORIGINAL
 TRACINGS ARE FILED IN THE
 TAX ASSESSOR'S OFFICE.

LEGEND
 1 - BLOCK NUMBER
 3 - PARCEL NUMBER
 (S)-SCALED DIMENSION
 (D)-DEED DIMENSION
 5 - DEVELOPMENT LOT NUMBER

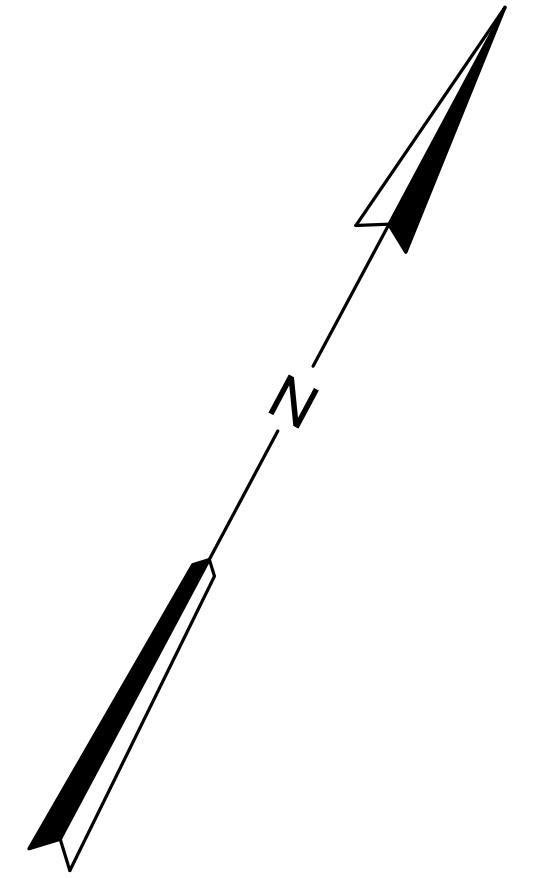
TAX MAP
TOWNSHIP OF LOPATCONG
 WARREN COUNTY, NEW JERSEY
 SCALE 1"=100' JANUARY 1961
 EDWARD B. VAN NOTE, L.S. 8238

PREPARED BY
 AMERICAN AIR SURVEYS, INC.,
 907 PENN AVENUE - PITTSBURGH, PA.

IN ASSOCIATION WITH
 EDWARD B. VAN NOTE, L.S.
 234 NASSAU STREET - PRINCETON, NEW JERSEY

REVISIONS		
DATE	NAME	LIC. NO.
7-97	LOHN P. MORRISON	34689
12-2002	LEONARDO E. PONZIO	39402
06-2003	LEONARDO E. PONZIO	39402

SHEET 1



SHEET 202

SHEET 206

THIS TAX MAP SHEET IS A
 SCANNED COPY OF THE MAP
 PREPARED BY EDWARD B. VAN NOTE,
 L.S., DATED JANUARY 1961
 AND REVISED THROUGH
 MARCH 2002. THE ORIGINAL
 TRACINGS ARE FILED IN THE
 TAX ASSESSOR'S OFFICE.

LEGEND
 [] BLOCK NUMBER
 (S) SCALED DIMENSION
 (D) DEED DIMENSION
 3 - PARCEL NUMBER
 5 - DEVELOPMENT LOT NUMBER

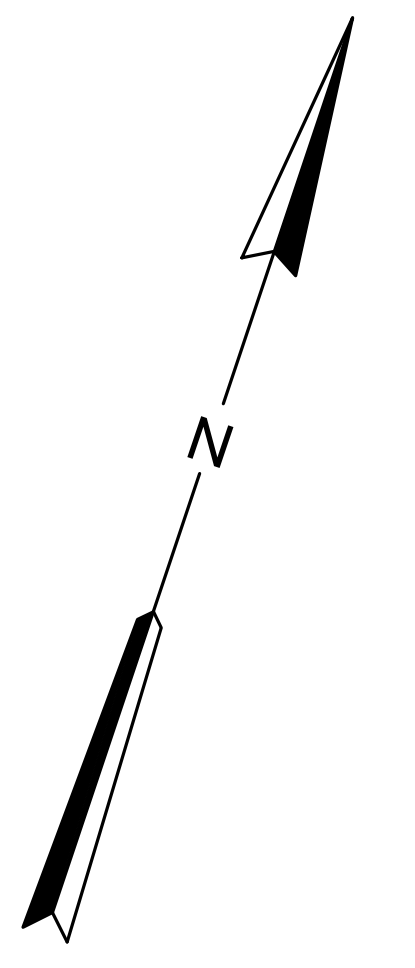
TAX MAP
TOWNSHIP OF LOPATCONG
 WARREN COUNTY, NEW JERSEY
 SCALE 1"=100' JANUARY 1961
 EDWARD B. VAN NOTE, L.S. 8238

PREPARED BY
 AMERICAN AIR SURVEYS, INC.
 907 PENN AVENUE - PITTSBURGH, PA.

IN ASSOCIATION WITH
 EDWARD B. VAN NOTE, L.S.
 234 NASSAU STREET - PRINCETON, NEW JERSEY

REVISIONS		
DATE	NAME	LIC. NO.
7-97	JOHN P. MORRISON	34689
12-2001	MICHAEL ANGELINE	14156
3-02	MICHAEL ANGELINE	14156
12-2002	LEONARDO E. PONZIO	39402
06-2003	LEONARDO E. PONZIO	39402
07-2014	WILLIAM G. BERGH	GS23946
01-2023	WILLIAM G. BERGH	GS23946

SHEET 2.06



SHEET 2

SHEET 2

THIS TAX MAP SHEET IS A DIGITIZED COPY OF THE TAX MAP ORIGINALLY PREPARED BY EDWARD B. VAN NOTE, L.S., DATED JANUARY 1961 AND REVISED THROUGH MARCH 2002. THE ORIGINAL TRACINGS ARE FILED IN THE TAX ASSESSOR'S OFFICE.

LEGEND
 [] BLOCK NUMBER
 - - - - - PARCEL NUMBER
 (S)-SCALED DIMENSION
 (D)-FIELD DIMENSION
 (5)-DEVELOPMENT LOT NUMBER

TAX MAP
TOWNSHIP OF LOPATCONG
 WARREN COUNTY, NEW JERSEY
 SCALE 1"=100' JANUARY 1961
 EDWARD B. VAN NOTE, L.S. 8238

PREPARED BY
 AMERICAN AIR SURVEYS, INC.
 907 PENN AVENUE - PITTSBURGH, PA.

IN ASSOCIATION WITH
 EDWARD B. VAN NOTE, L.S.
 234 NASSAU STREET - PRINCETON, NEW JERSEY

SHEET 2.05



REVISIONS		
7-87	JOHN P. MORRISON	34689
1-98	JOHN P. MORRISON	34689
12-98	JOHN P. MORRISON	34689
1-00	GLEN LLOYD	37598
12-2002	LEONARDO E. PONZO	39402
06-2003	LEONARDO E. PONZO	39402
04-2007	WILLIAM G. BERGH	23946
07-2008	WILLIAM G. BERGH	23946
01-2013	ERIC V. WILDE	43279

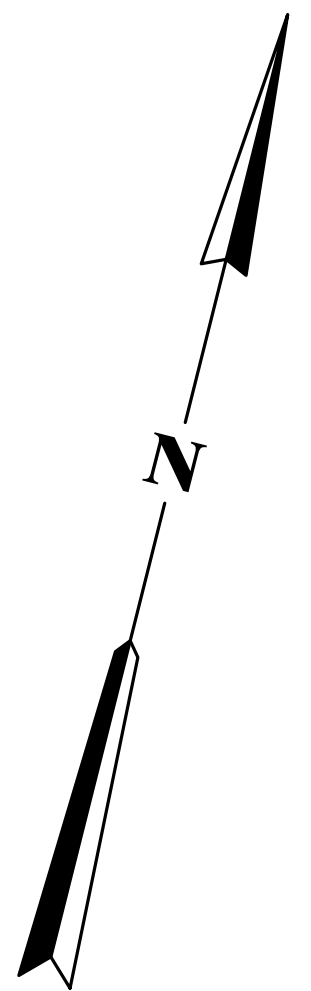
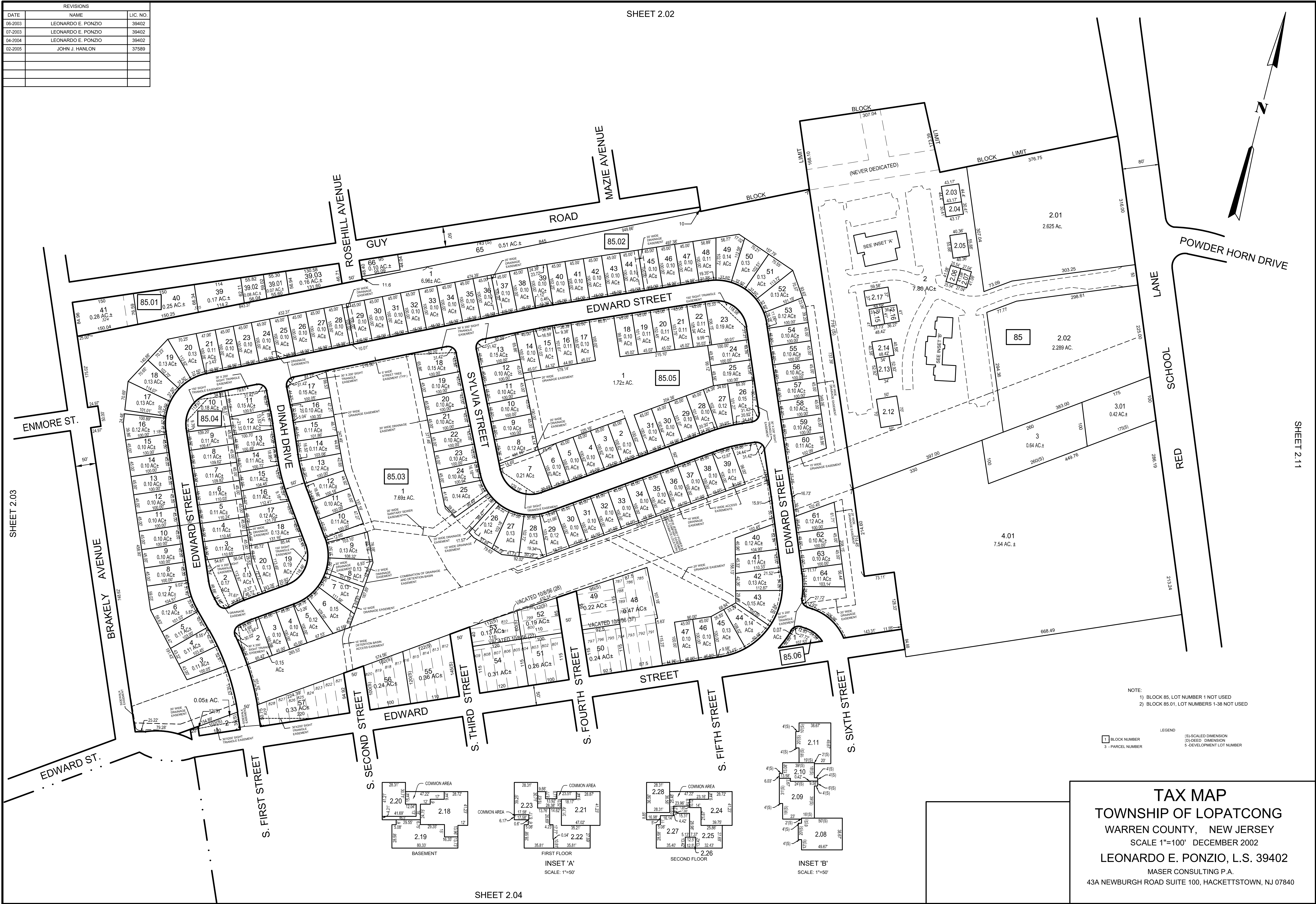
THIS TAX MAP SHEET IS A
SCANNED COPY OF THE MAP
PREPARED BY EDWARD B. VAN NOTE,
L.S., DATED JANUARY 1961
AND REVISED THROUGH
MARCH 2002. THE ORIGINAL
TRACINGS ARE FILED IN THE
TAX ASSESSOR'S OFFICE.

TAX MAP
TOWNSHIP OF LOPATCONG
WARREN COUNTY, NEW JERSEY
SCALE 1"=100' JANUARY 1961
EDWARD B. VAN NOTE, L.S. 8238

PREPARED BY
AMERICAN AIR SURVEYS, INC.
907 PENN AVENUE - PITTSBURGH, PA.
IN ASSOCIATION WITH
EDWARD B. VAN NOTE, L.S.
234 NASSAU STREET - PRINCETON, NEW JERSEY

LEGEND
 [] BLOCK NUMBER
 - - - - - 3 - PARCEL NUMBER
 (S)-SCALED DIMENSION
 (D)-DEED DIMENSION
 * - DEVELOPMENT LOT NUMBER

REVISIONS		
DATE	NAME	LIC. NO.
06-2003	LEONARDO E. PONZIO	39402
07-2003	LEONARDO E. PONZIO	39402
04-2004	LEONARDO E. PONZIO	39402
02-2005	JOHN J. HANLON	37589



SHEET 2.03

SHEET 2.11

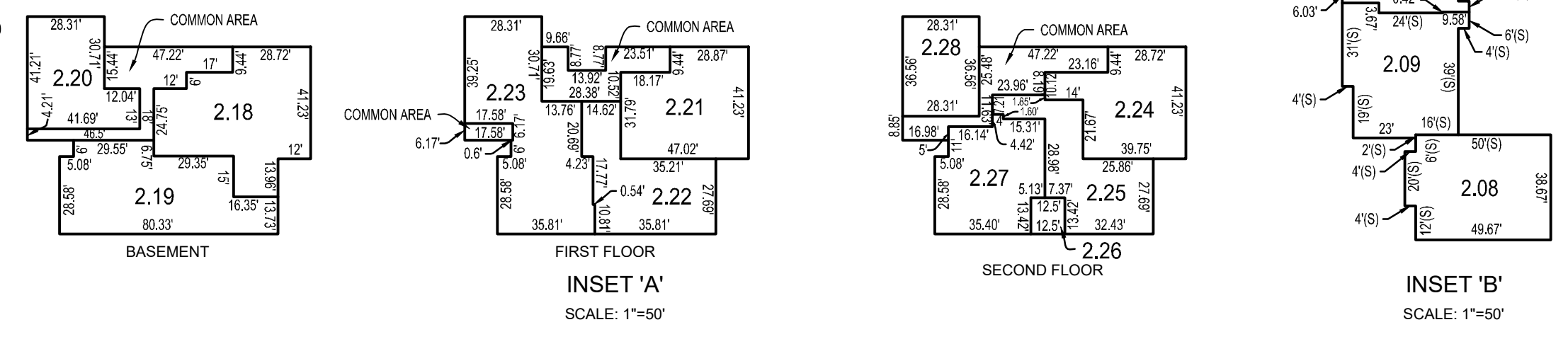
- NOTE:
- 1) BLOCK 85, LOT NUMBER 1 NOT USED
 - 2) BLOCK 85.01, LOT NUMBERS 1-38 NOT USED

LEGEND

1 - BLOCK NUMBER
3 - PARCEL NUMBER

(S) - SCALED DIMENSION
(D) - DEED DIMENSION
(L) - DEVELOPMENT LOT NUMBER

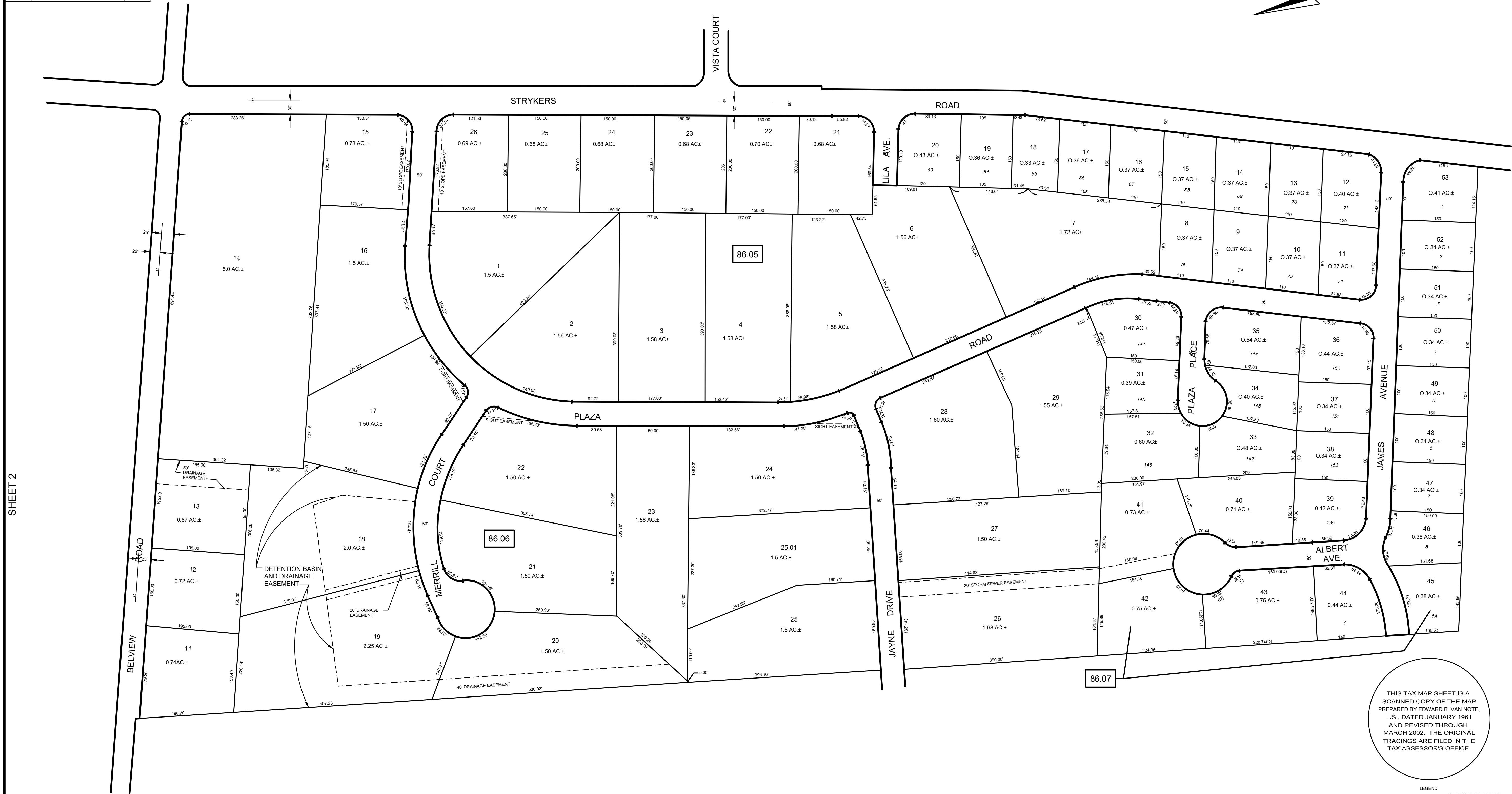
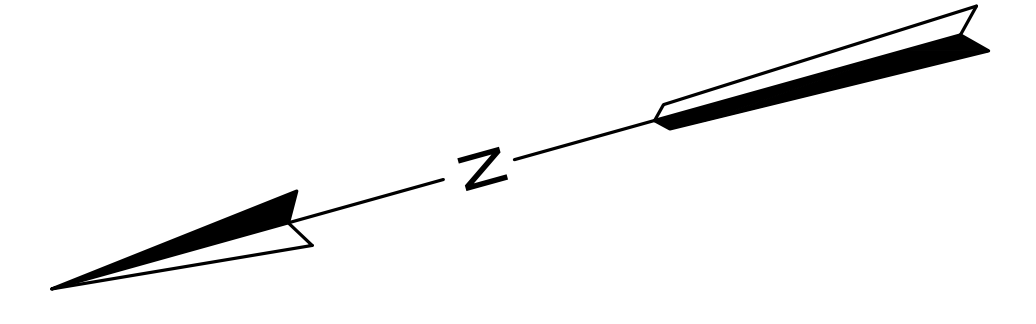
TAX MAP
TOWNSHIP OF LOPATCONG
 WARREN COUNTY, NEW JERSEY
 SCALE 1"=100' DECEMBER 2002
 LEONARDO E. PONZIO, L.S. 39402
 MASER CONSULTING P.A.
 43A NEWBURGH ROAD SUITE 100, HACKETTSTOWN, NJ 07840



SHEET 2.04

REVISIONS		
DATE	NAME	LIC. NO.
7-97	JOHN P. MORRISON	34689
12-2001	MICHAEL ANGELINE	14156
3-02	MICHAEL ANGELINE	14156
12-2002	LEONARDO E. PONZIO	39402
06-2003	LEONARDO E. PONZIO	39402
11-2003	LEONARDO E. PONZIO	39402
09-2003	JOHN J. HANLON, P.L.S.	37589
09-2004	JOHN J. HANLON, P.L.S.	37589

SHEET 5



SHEET 2

SHEET 2.14

THIS TAX MAP SHEET IS A SCANNED COPY OF THE MAP PREPARED BY EDWARD B. VAN NOTE, L.S., DATED JANUARY 1961 AND REVISED THROUGH MARCH 2002. THE ORIGINAL TRACINGS ARE FILED IN THE TAX ASSESSOR'S OFFICE.

LEGEND
 [] BLOCK NUMBER
 3 - PARCEL NUMBER
 (S) SCALED DIMENSION
 (D) DEED DIMENSION
 5 - DEVELOPMENT LOT NUMBER

TAX MAP
 TOWNSHIP OF LOPATCONG
 WARREN COUNTY, NEW JERSEY
 SCALE 1"=100' JANUARY 1961
 EDWARD B. VAN NOTE, L.S. 8238
 VAN NOTE - HARVEY ASSOCIATES
 CONSULTING ENGINEERS & LAND SURVEYORS
 234 NASSAU STREET - PRINCETON, NEW JERSEY

SHEET 2.16

REVISIONS		
DATE	NAME	LIC. NO.
7-97	JOHN P. MORRISON	34689
06-2003	LEONARDO E. PONZIO	39402

SHEET 2.15

SHEET 2.13

SHEET 2.01

SHEET 2.09

SHEET 2.02



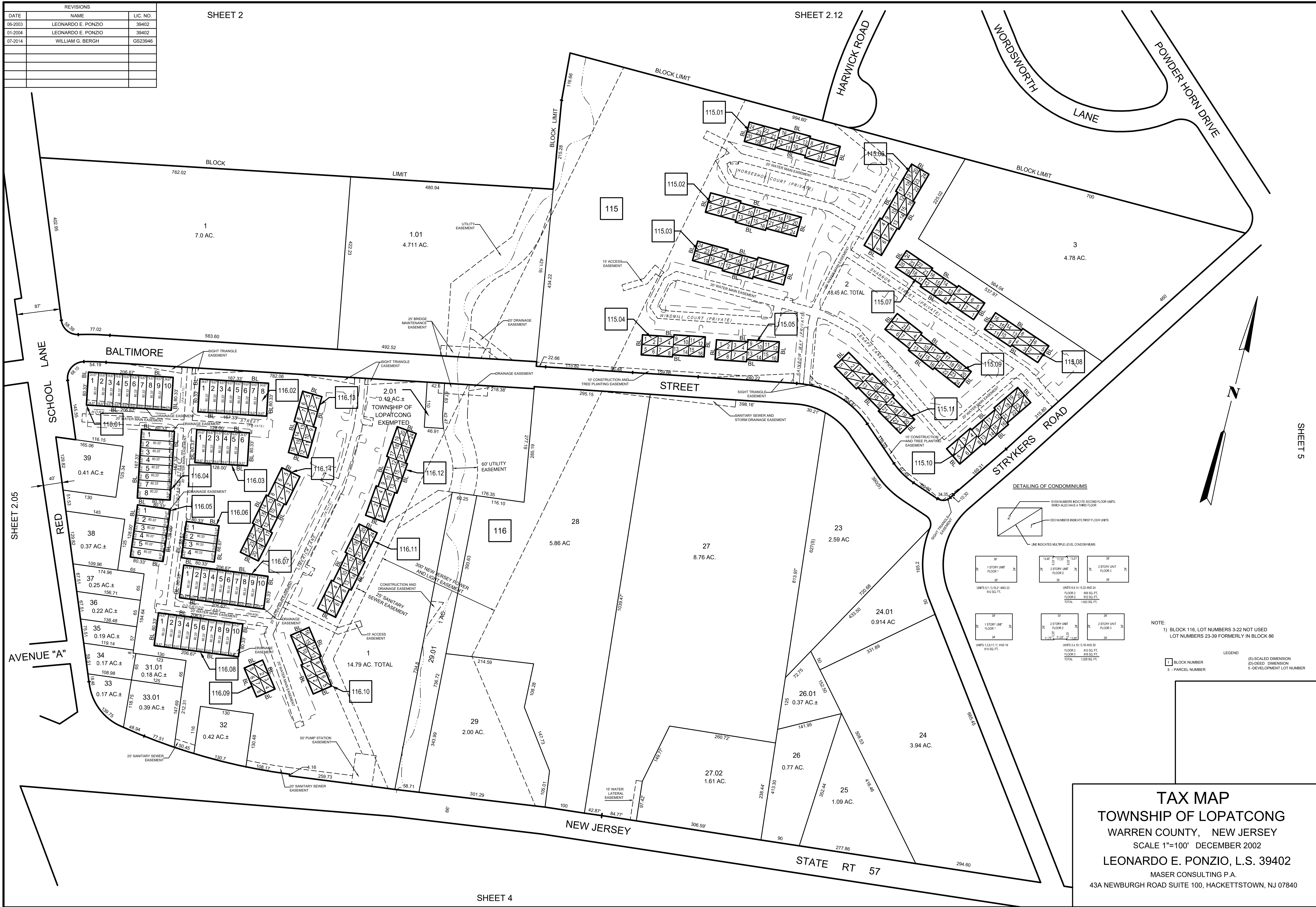
THIS TAX MAP SHEET IS A
 SCANNED COPY OF THE MAP
 PREPARED BY EDWARD B. VAN NOTE,
 L.S., DATED JANUARY 1961
 AND REVISED THROUGH
 MARCH 2002. THE ORIGINAL
 TRACINGS ARE FILED IN THE
 TAX ASSESSOR'S OFFICE.

LEGEND
 [] BLOCK NUMBER
 - - - DIMENSION
 3 - PARCEL NUMBER
 (S) SCALED DIMENSION
 (D) DIMENSION
 5 - DEVELOPMENT LOT NUMBER

TAX MAP
TOWNSHIP OF LOPATCONG
 WARREN COUNTY, NEW JERSEY
 SCALE 1"=100' AUGUST 1970

C. DOUGLAS CHERRY & ASSOCIATES
 CONSULTING ENGINEERS - PLANNERS
 PHILLIPSBURG, NJ

SHEET 2.11



SHEET 5

SHEET 2

DATE	NAME	LIC. NO.
06-2003	LEONARDO E. PONZIO	39402
01-2004	LEONARDO E. PONZIO	39402
07-2014	WILLIAM G. BERGH	GS23946

SHEET 2.12

SHEET 4



SHEET 2.02

SHEET 2.06

SHEET 2.12

DATE	REVISIONS	AUTH.
DEC. 1/1974	ADD SHEET NUMBERS	C.D.C. & ASSOC.
DATE	NAME	LIC. NO.
7-97	JOHN P. MORRISON	LIC. 34689
06-2003	LEONARDO E. PONZIO	39402

THIS TAX MAP SHEET IS A SCANNED COPY OF THE MAP PREPARED BY EDWARD B. VAN NOTE, L.S., DATED JANUARY 1961 AND REVISED THROUGH MARCH 2002. THE ORIGINAL TRACINGS ARE FILED IN THE TAX ASSESSOR'S OFFICE.

LEGEND
 [] BLOCK NUMBER
 3 - PARCEL NUMBER
 (S) SCALED DIMENSION
 (D) UN-SCALED DIMENSION
 5 - DEVELOPMENT LOT NUMBER

TAX MAP
TOWNSHIP OF LOPATCONG
 WARREN COUNTY, NEW JERSEY
 SCALE 1"=100' SEPTEMBER 1972

C. DOUGLAS CHERRY & ASSOCIATES
 CONSULTING ENGINEERS - PLANNERS
 PHILLIPSBURG, NJ



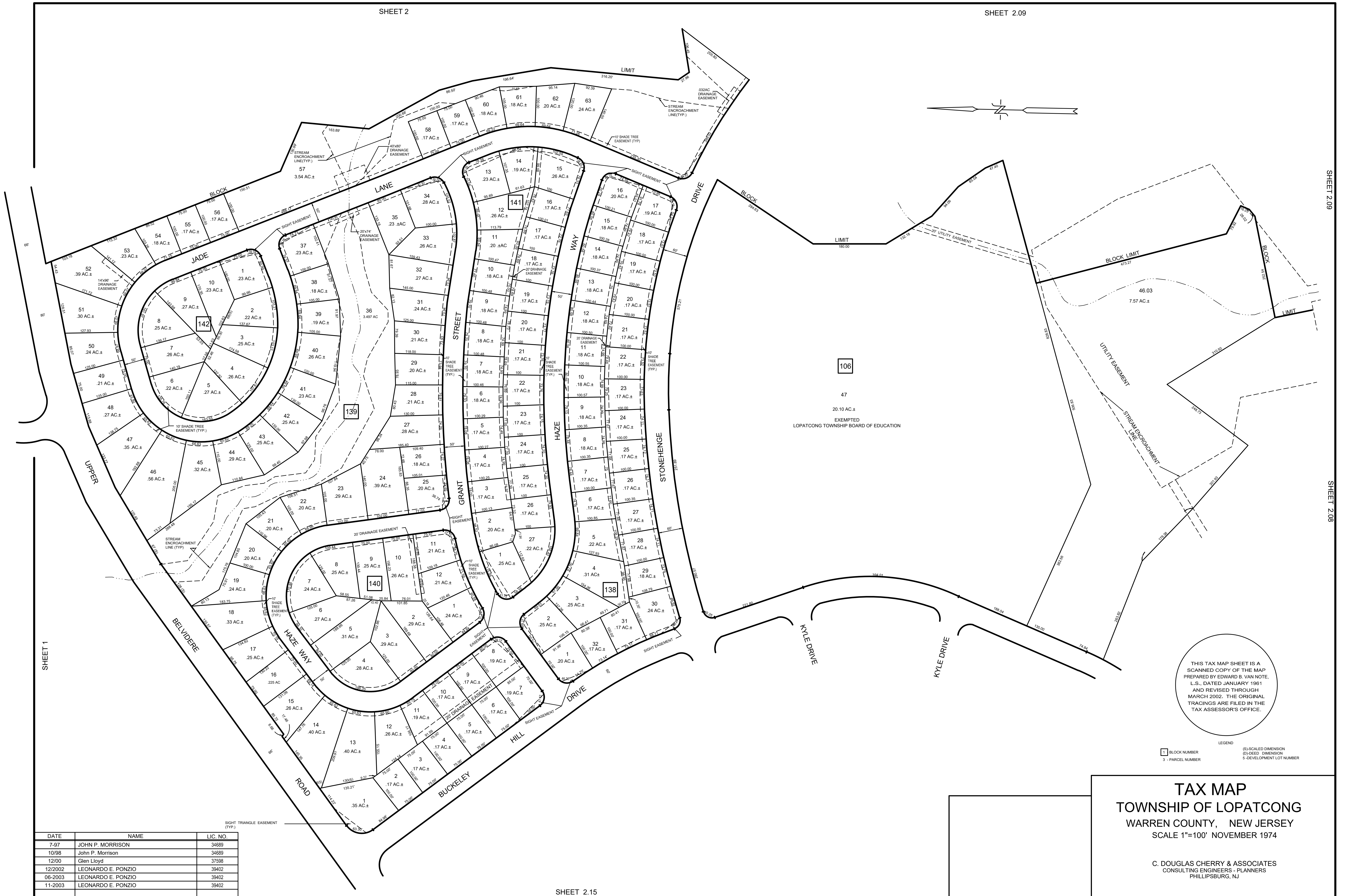
THIS TAX MAP SHEET IS A SCANNED COPY OF THE MAP PREPARED BY EDWARD B. VAN NOTE, L.S., DATED JANUARY 1961 AND REVISED THROUGH MARCH 2002. THE ORIGINAL TRACINGS ARE FILED IN THE TAX ASSESSOR'S OFFICE.

LEGEND
 [] BLOCK NUMBER
 - - - - - UTILITY EASEMENT
 [] 3 - PARCEL NUMBER
 (S)-SCALED DIMENSION
 (D)-FIELD DIMENSION
 (L)-DEVELOPMENT LOT NUMBER

TAX MAP
TOWNSHIP OF LOPATCONG
 WARREN COUNTY, NEW JERSEY
 SCALE 1"=100' AUGUST 1973

C. DOUGLAS CHERRY & ASSOCIATES
 CONSULTING ENGINEERS - PLANNERS
 PHILLIPSBURG, NJ

DATE	NAME	LIC. NO.
06-2003	LEONARDO E. PONZIO	39402



DATE	NAME	LIC. NO.
7-97	JOHN P. MORRISON	34689
10/98	John P. Morrison	34689
12/00	Glen Lloyd	37598
12/2002	LEONARDO E. PONZIO	39402
06-2003	LEONARDO E. PONZIO	39402
11-2003	LEONARDO E. PONZIO	39402

TAX MAP
TOWNSHIP OF LOPATCONG
 WARREN COUNTY, NEW JERSEY
 SCALE 1"=100' NOVEMBER 1974

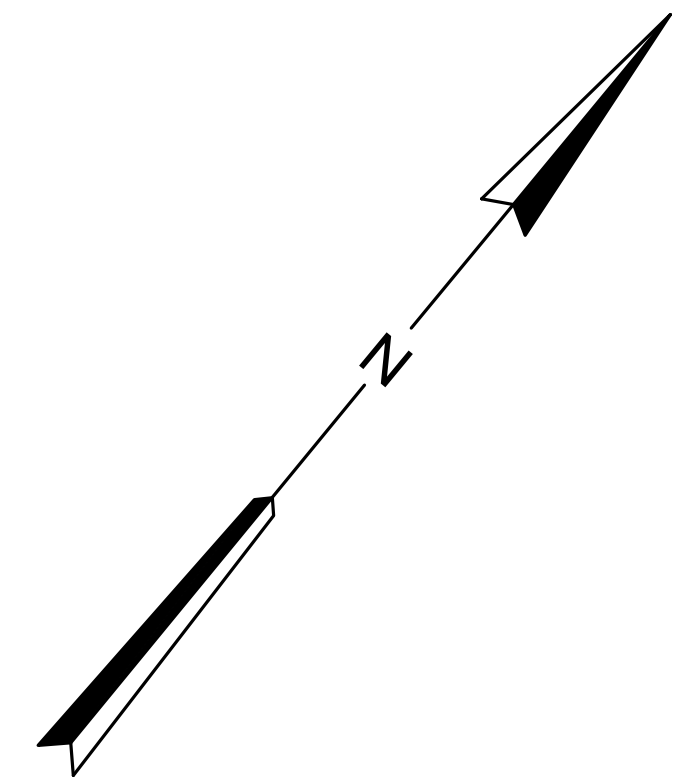
C. DOUGLAS CHERRY & ASSOCIATES
 CONSULTING ENGINEERS - PLANNERS
 PHILLIPSBURG, NJ

REVISIONS		
DATE	NAME	LIC NO
7-97	JOHN P. MORRISON	34689
7-97	JOHN P. MORRISON	34689
12-98	JOHN P. MORRISON	34689
3-02	MICHAEL ANGELINE	14156
12-2002	LEONARDO E. PONZIO	39402
06-2003	LEONARDO E. PONZIO	39402
09-2004	JOHN J. HANLON, P.L.S.	37589

SHEET 2

SHEET 2.12

SHEET 2.07

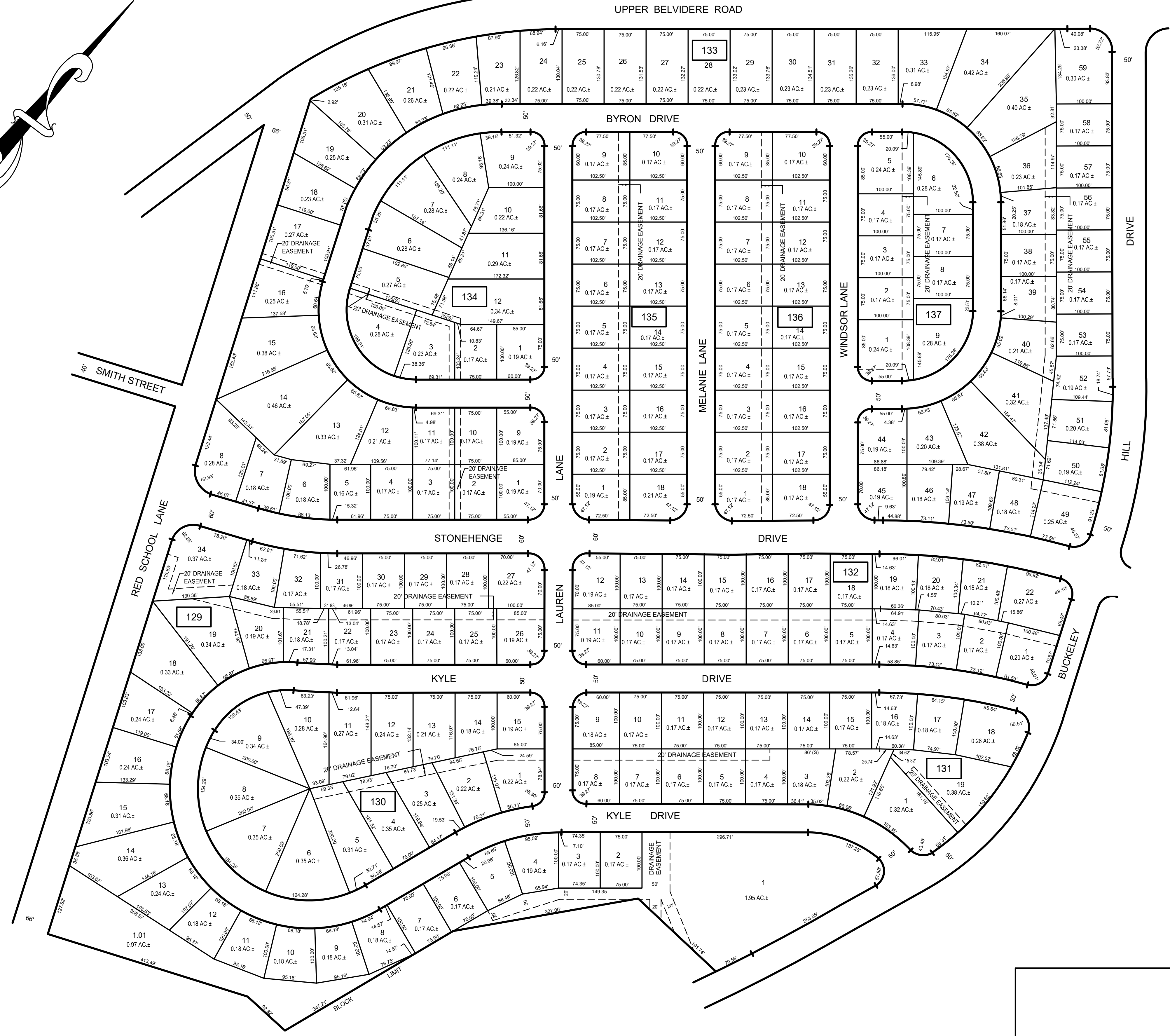
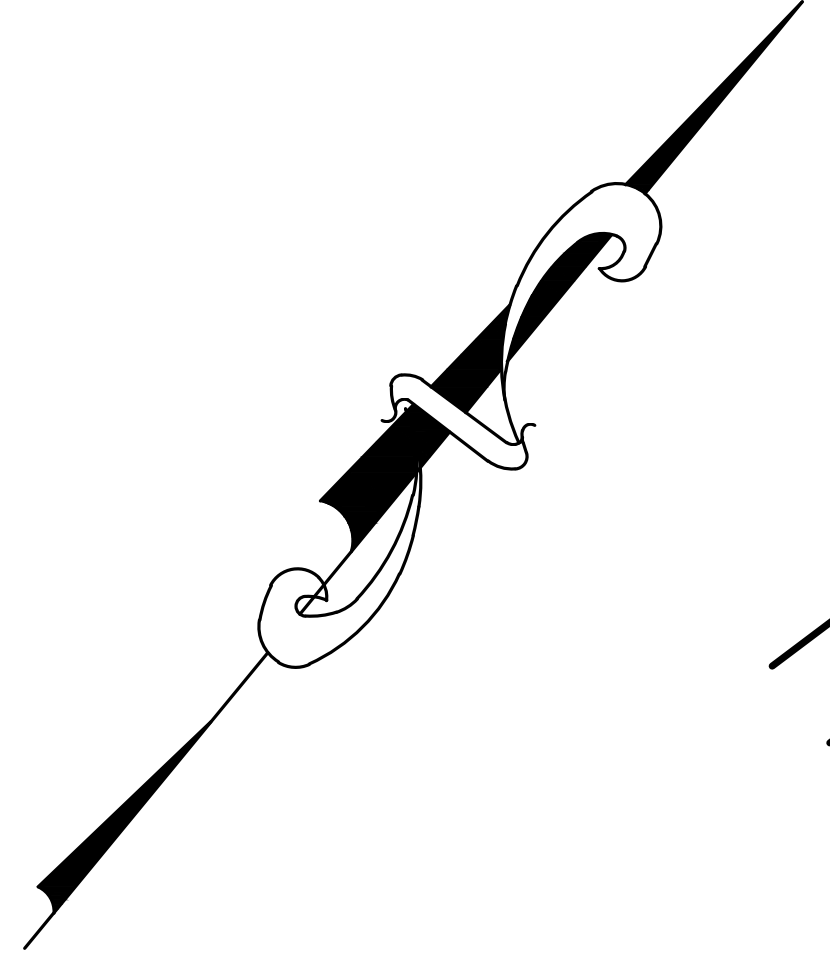


THIS TAX MAP SHEET IS A SCANNED COPY OF THE MAP PREPARED BY ANTHONY C. CANGER, L.S., DATED FEBRUARY 1994 AND REVISED THROUGH MARCH 2002. THE ORIGINAL TRACINGS ARE FILED IN THE TAX ASSESSOR'S OFFICE.

LEGEND
 □ BLOCK NUMBER
 (S)- SCALED DIMENSION
 (D)- REED DIMENSION
 3 - PARCEL NUMBER
 5 - DEVELOPMENT LOT NUMBER

TAX MAP
TOWNSHIP OF LOPATCONG
 WARREN COUNTY, NEW JERSEY
 SCALE 1"=200' FEBRUARY 1994
 ANTHONY C. CANGER, N.J.L.S. 15099
 CANGER & CASSERA, INC
 550 MARSHALL STREET, PHILLIPSBURG, N.J. 08865

REVISIONS		
DATE	NAME	LIC NO
7-97	JOHN P. MORRISON	34689
06-2003	LEONARDO E. PONZIO	39402



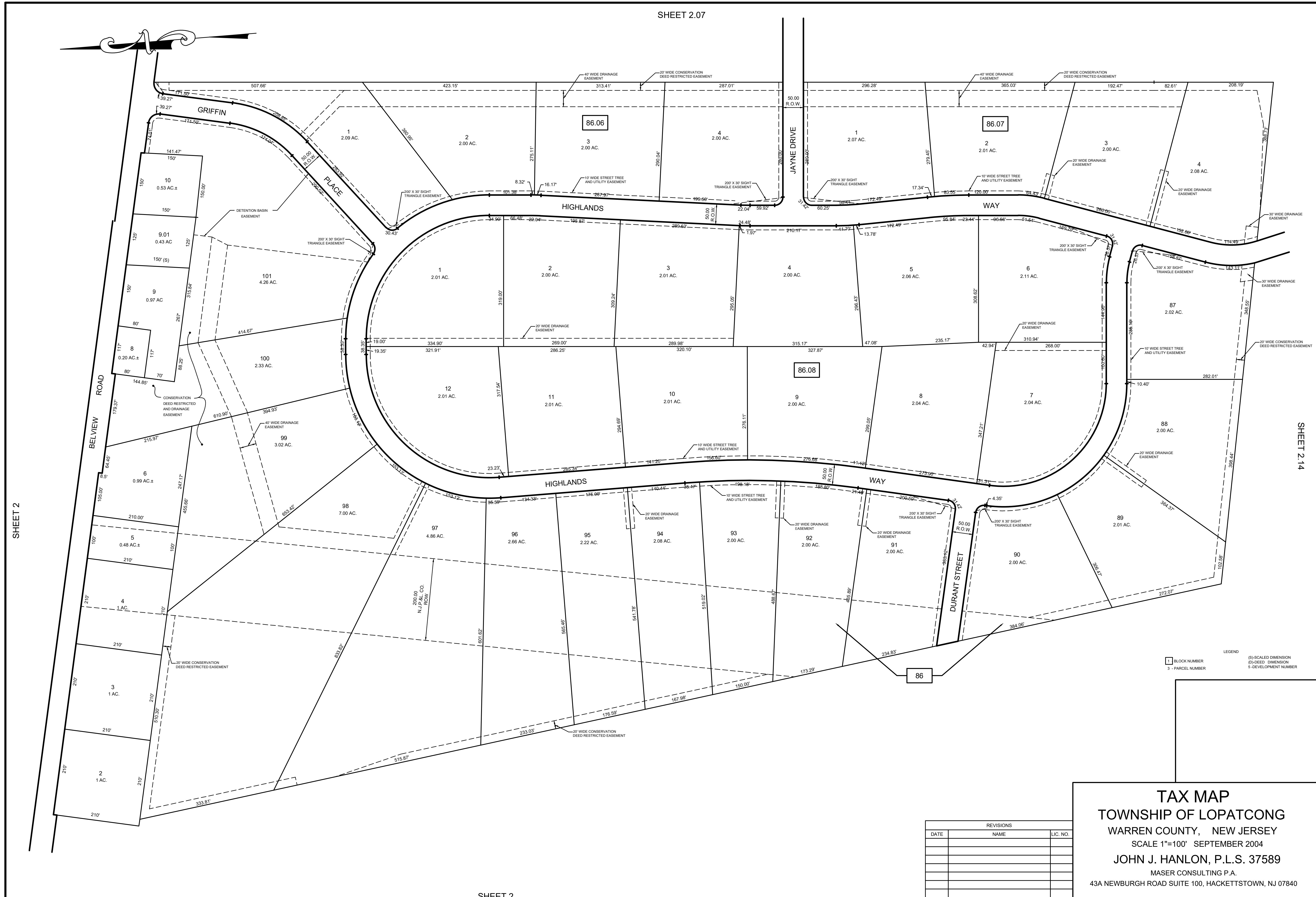
SHEET 2.01

SHEET 2.13

THIS TAX MAP SHEET IS A SCANNED COPY OF THE MAP PREPARED BY ANTHONY C. CANGER, L.S., DATED FEBRUARY 1994 AND REVISED THROUGH JULY 1997. THE ORIGINAL TRACINGS ARE FILED IN THE TAX ASSESSOR'S OFFICE.

LEGEND
 □ BLOCK NUMBER
 - - - - - DIMENSIONED
 3 - PARCEL NUMBER
 (S)-SCALED DIMENSION
 (D)-DEVELOPMENT LOT NUMBER

TAX MAP
TOWNSHIP OF LOPATCONG
 WARREN COUNTY, NEW JERSEY
 SCALE 1"=100' FEBRUARY 1994
 ANTHONY C. CANGER, N.J.L.S. 15099
 CANGER & CASSERA, INC.
 550 MARSHALL STREET - PHILLIPSBURG, N.J. 08865



SHEET 2

SHEET 2.14

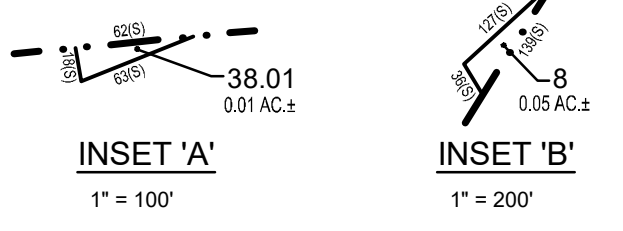
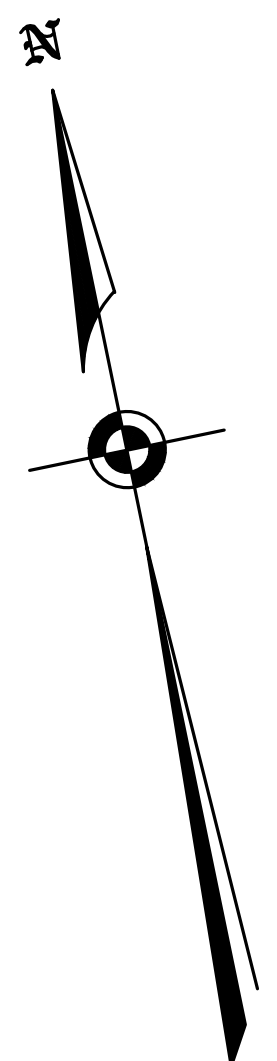
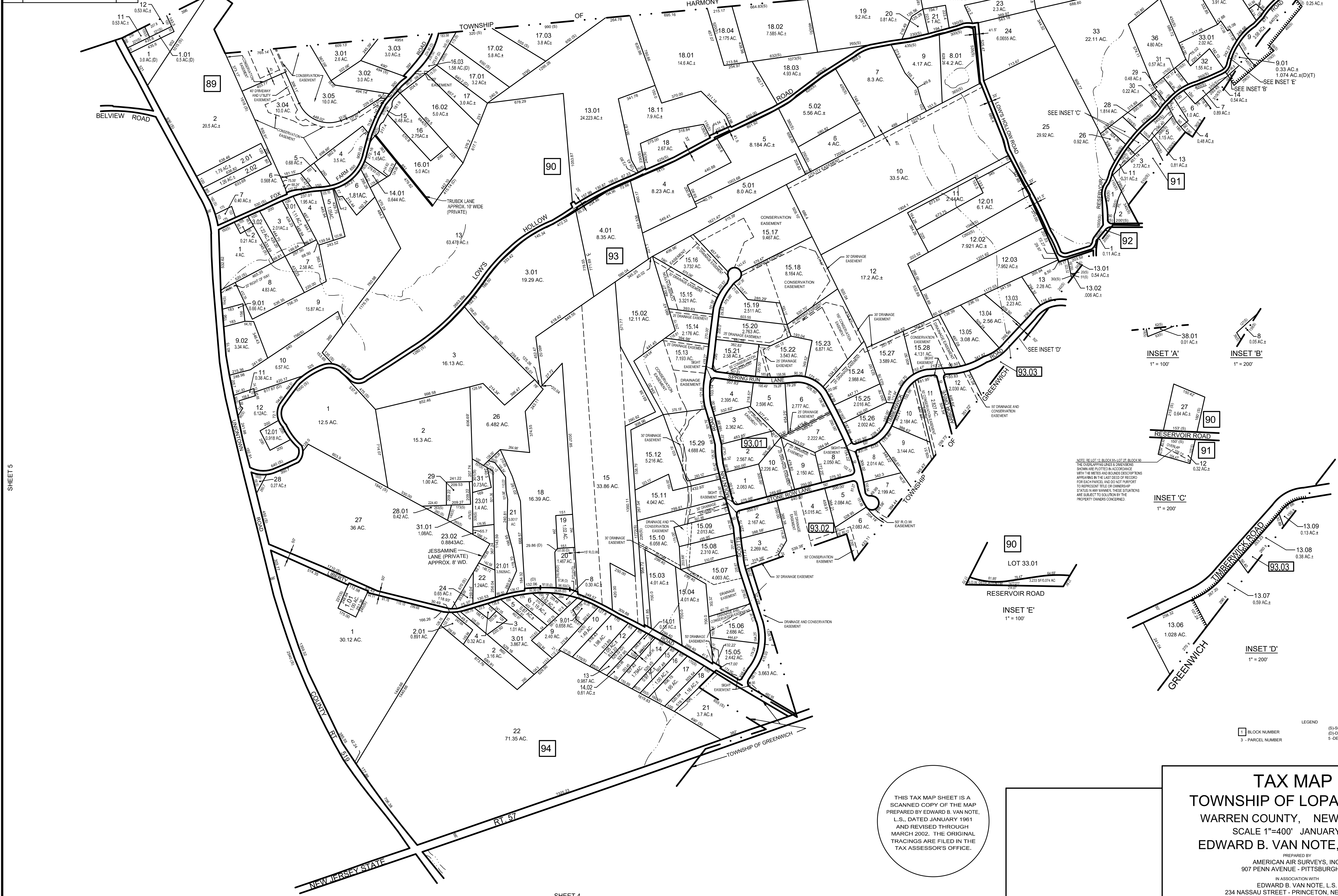
SHEET 2

REVISIONS		
DATE	NAME	LIC. NO.

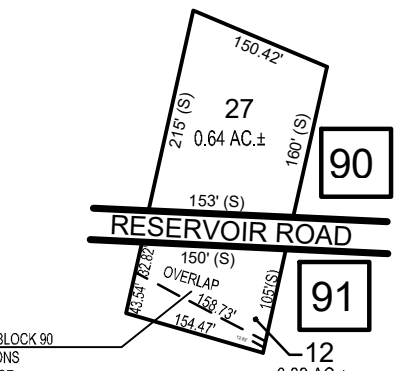
TAX MAP
TOWNSHIP OF LOPATCONG
 WARREN COUNTY, NEW JERSEY
 SCALE 1"=100' SEPTEMBER 2004
 JOHN J. HANLON, P.L.S. 37589
 MASER CONSULTING P.A.
 43A NEWBURGH ROAD SUITE 100, HACKETTSTOWN, NJ 07840

LEGEND
 1 - BLOCK NUMBER
 3 - PARCEL NUMBER
 (S)-SCALED DIMENSION
 (D)-DEED DIMENSION
 E-DEVELOPMENT NUMBER

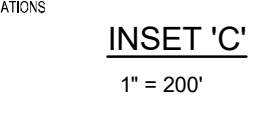
DATE	NAME	LIC. NO.
7-87	JOHN P. MORRISON	34689
12-88	JOHN P. MORRISON	39689
1-00	Glen Lloyd	37588
12-2001	MICHAEL ANGELENE	14156
2-2002	LEONARDO E. PONZIO	39402
9-2003	LEONARDO E. PONZIO	39402
1-2004	JOHN J. HANLON, P.L.S.	37589



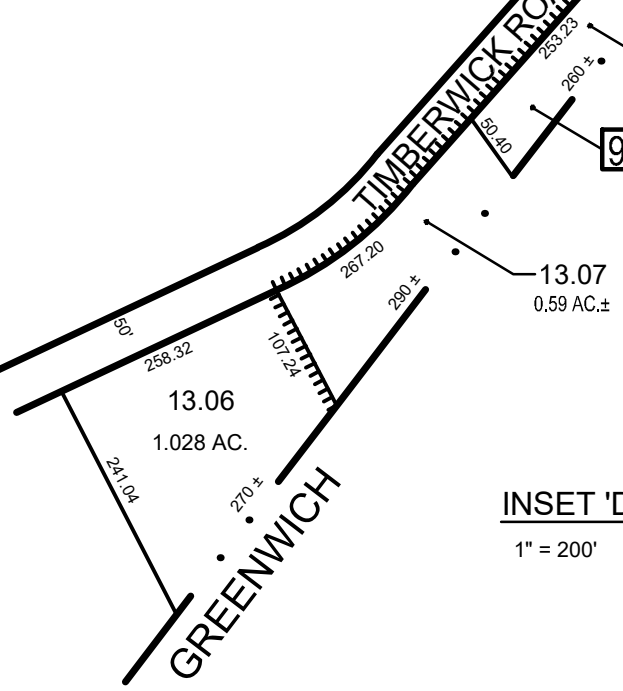
INSET 'A'
1" = 100'



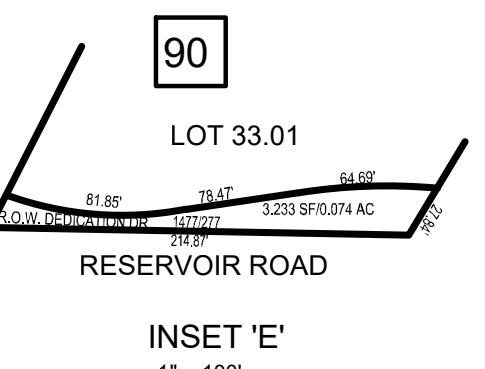
INSET 'B'
1" = 200'



INSET 'C'
1" = 200'



INSET 'D'
1" = 200'



INSET 'E'
1" = 100'

NOTE: SET-UP BLOCKS NOT IN BLOCKS SHOWN ARE PLOTTED IN ACCORDANCE WITH THE METES AND BOUNDARIES APPEARING IN THE LAST DEED OF RECORD FOR EACH PARCEL AND DO NOT PURPORT TO REPRESENT TITLE OR DIMENSIONS. STATUS IN ANY MATTER, THESE DIMENSIONS ARE SUBJECT TO SOLUTION BY THE PROPERTY OWNERS CONCERNED.

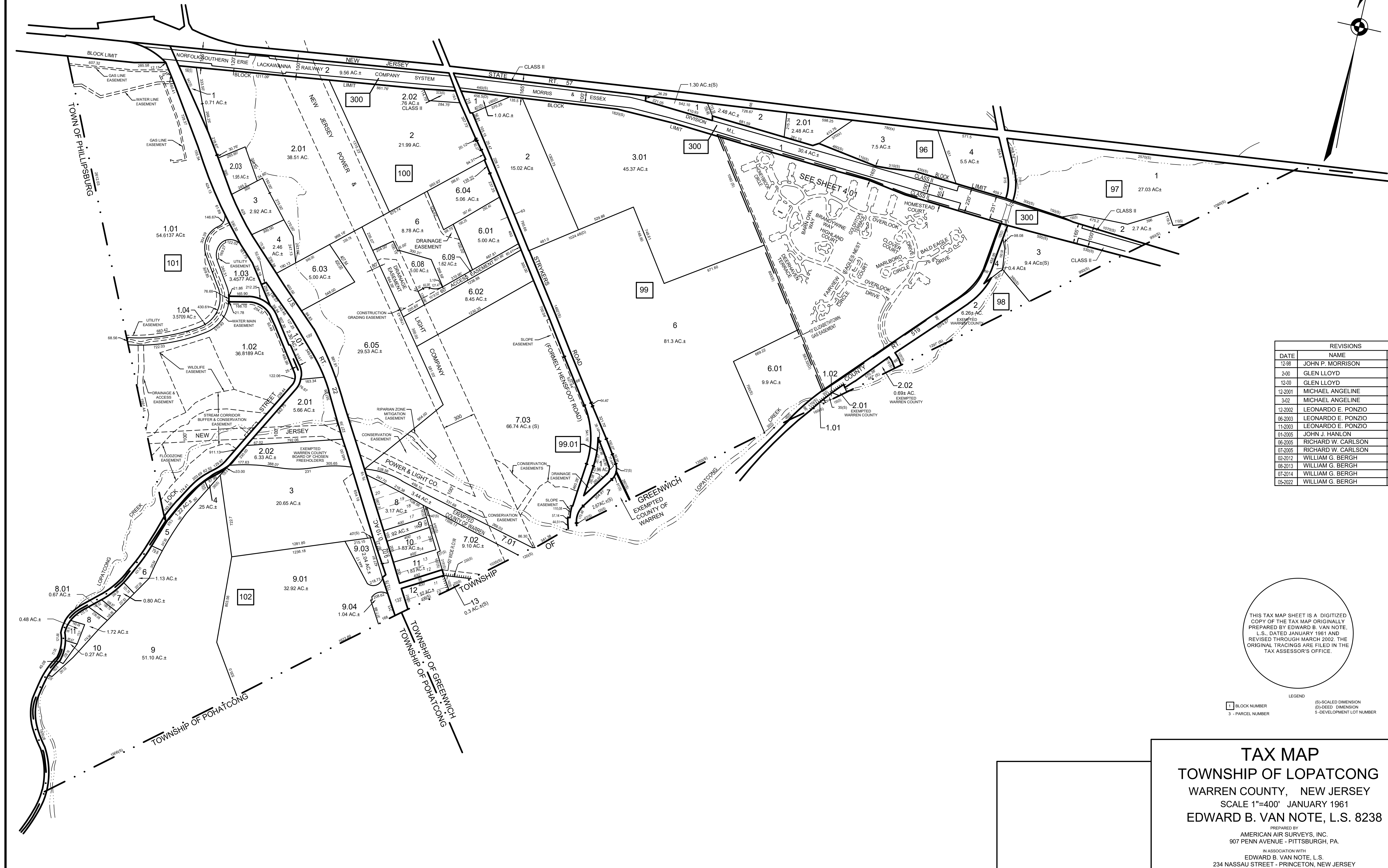
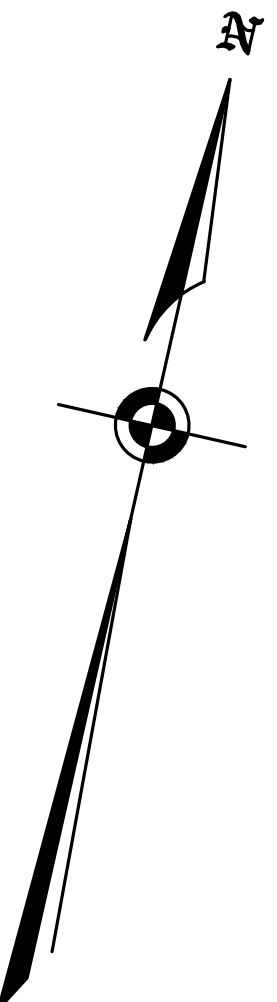
LEGEND
 □ BLOCK NUMBER
 3 - PARCEL NUMBER
 (S)-SCALED DIMENSION
 (D)-DEED DIMENSION
 5-DEVELOPMENT LOT NUMBER

THIS TAX MAP SHEET IS A SCANNED COPY OF THE MAP PREPARED BY EDWARD B. VAN NOTE, L.S., DATED JANUARY 1961 AND REVISED THROUGH MARCH 2002. THE ORIGINAL TRACINGS ARE FILED IN THE TAX ASSESSOR'S OFFICE.

TAX MAP
TOWNSHIP OF LOPATCONG
 WARREN COUNTY, NEW JERSEY
 SCALE 1"=400' JANUARY 1961
 EDWARD B. VAN NOTE, L.S. 8238
 PREPARED BY
 AMERICAN AIR SURVEYS, INC.
 907 PENN AVENUE - PITTSBURGH, PA.
 IN ASSOCIATION WITH
 EDWARD B. VAN NOTE, L.S.
 234 NASSAU STREET - PRINCETON, NEW JERSEY

SHEET 5

SHEET 4



REVISIONS		
DATE	NAME	LIC. NO.
12-98	JOHN P. MORRISON	34688
2-00	GLEN LLOYD	37598
12-00	MICHAEL ANGELINE	14156
3-02	MICHAEL ANGELINE	14156
12-2002	LEONARDO E. PONZIO	39402
06-2003	LEONARDO E. PONZIO	39402
11-2003	LEONARDO E. PONZIO	39402
01-2005	JOHN J. HANLON	37589
06-2005	RICHARD W. CARLSON	16207
07-2005	RICHARD W. CARLSON	16207
02-2012	WILLIAM G. BERGH	GS23946
08-2013	WILLIAM G. BERGH	GS23946
07-2014	WILLIAM G. BERGH	GS23946
05-2022	WILLIAM G. BERGH	GS23946

THIS TAX MAP SHEET IS A DIGITIZED COPY OF THE TAX MAP ORIGINALLY PREPARED BY EDWARD B. VAN NOTE, L.S., DATED JANUARY 1961 AND REVISED THROUGH MARCH 2002. THE ORIGINAL TRACINGS ARE FILED IN THE TAX ASSESSOR'S OFFICE.

LEGEND
 [] BLOCK NUMBER
 3 - PARCEL NUMBER
 (S)-SCALED DIMENSION
 (D)-DEED DIMENSION
 5 - DEVELOPMENT LOT NUMBER

TAX MAP
TOWNSHIP OF LOPATCONG
 WARREN COUNTY, NEW JERSEY
 SCALE 1"=400' JANUARY 1961
 EDWARD B. VAN NOTE, L.S. 8238

PREPARED BY
 AMERICAN AIR SURVEYS, INC.
 907 PENN AVENUE - PITTSBURGH, PA.

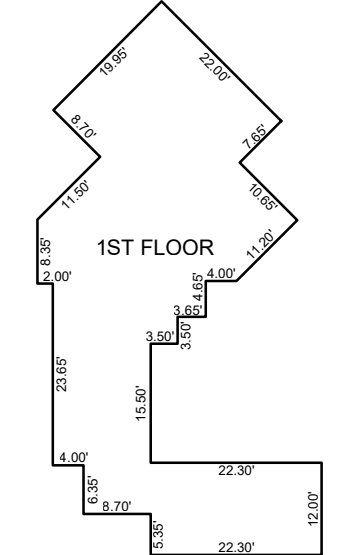
IN ASSOCIATION WITH
 EDWARD B. VAN NOTE, L.S.
 234 NASSAU STREET - PRINCETON, NEW JERSEY

REVISIONS		
DATE	NAME	LIC. NO.
7-97	JOHN P. MORRISON	34689
06-2003	LEONARDO E. PONZIO	39402
04-2004	LEONARDO E. PONZIO	39402

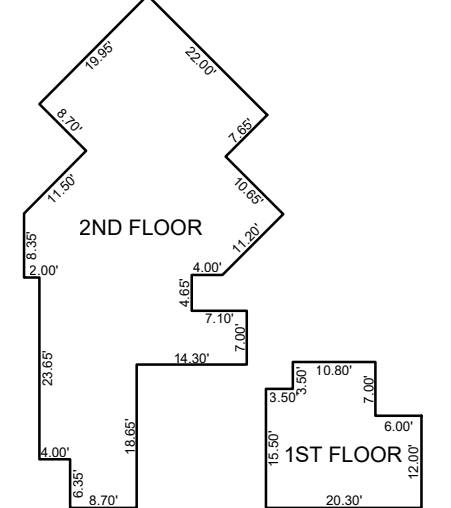


SHEET 4

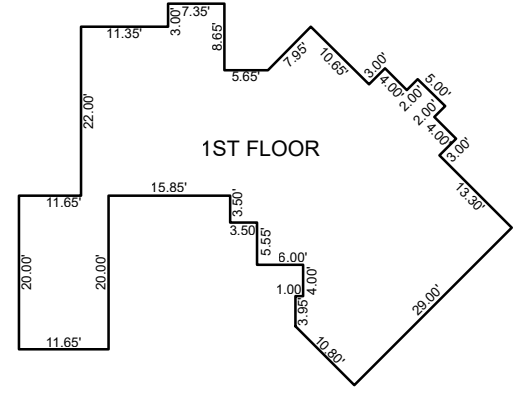
SHEET 4



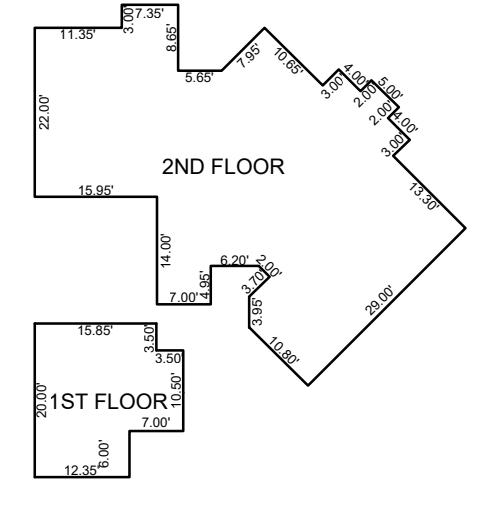
MODEL E1



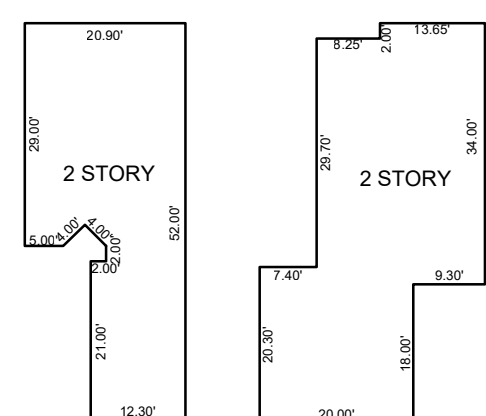
MODEL E2



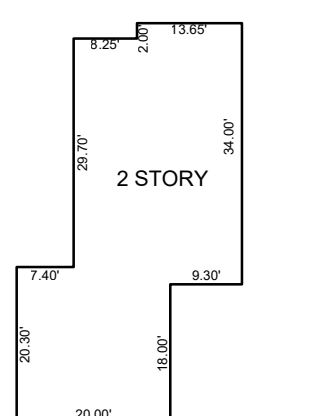
MODEL F1



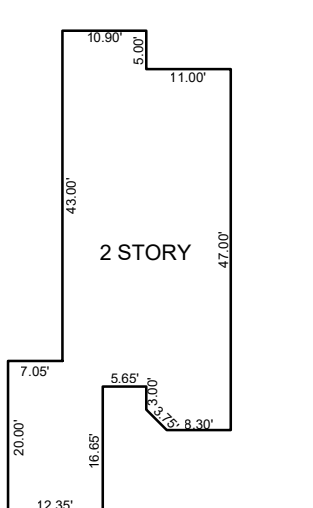
MODEL F2



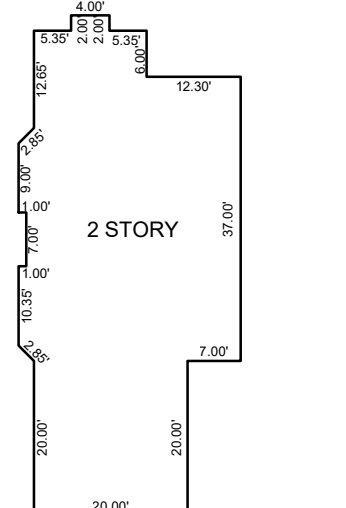
MODEL G



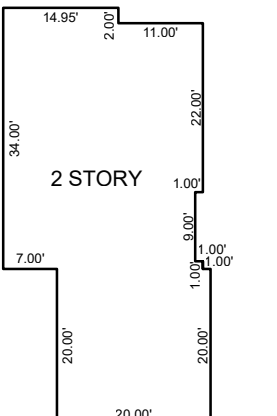
MODEL H



MODEL I

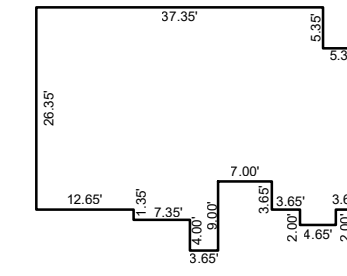


MODEL L

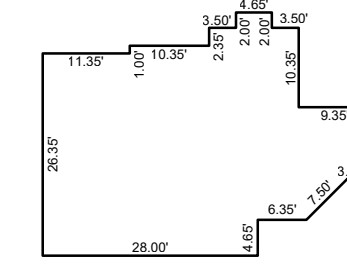


MODEL R

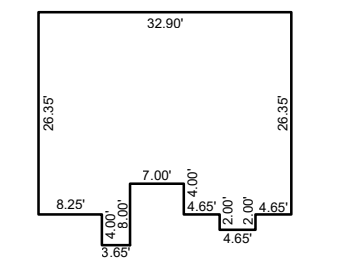
TOWNHOUSE DETAILS
SCALE: 1"=25'



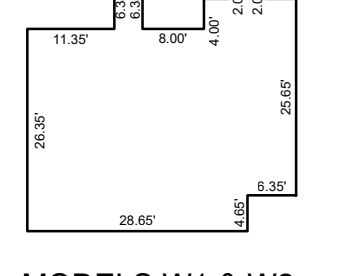
MODELS A1 & A2



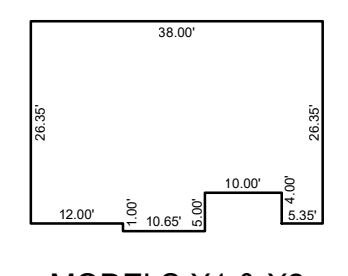
MODELS C1 & C2



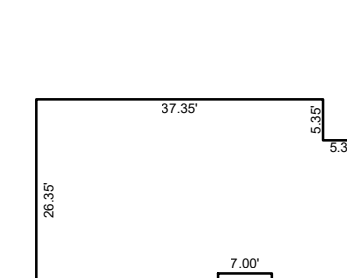
MODELS T1 & T2



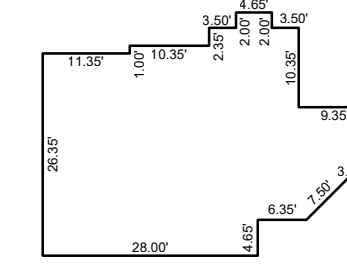
MODELS W1 & W2



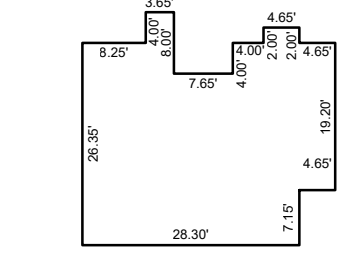
MODELS X1 & X2



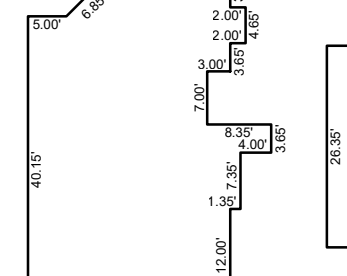
MODELS B1 & B2



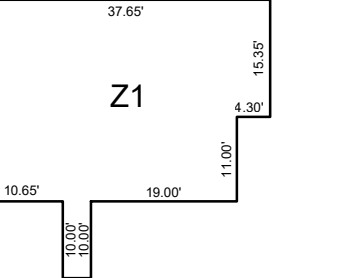
MODELS S1 & S2



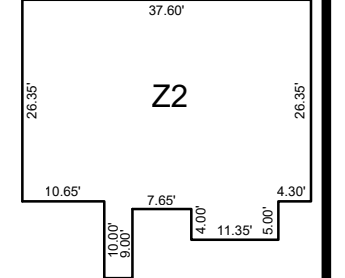
MODELS U1 & U2



MODELS Y1 & Y2



MODEL Z1



MODEL Z2

CONDOMINIUM DETAILS

SCALE: 1"=25'

NOTE: ALL MODELS A1, B1, C1, ETC., INDICATE FIRST FLOOR UNIT, AND ALL MODELS A2, B2, C2, ETC., INDICATE SECOND FLOOR UNIT.

THIS TAX MAP SHEET IS A
SCANNED COPY OF THE MAP
PREPARED BY GLEN LLOYD,
L.S., DATED MARCH 2000
AND REVISED THROUGH
MARCH 2002. THE ORIGINAL
TRACINGS ARE FILED IN THE
TAX ASSESSOR'S OFFICE.

- LEGEND
- BLOCK NUMBER
 - SCALED DIMENSION
 - 3 - PARCEL NUMBER
 - (D) DEED DIMENSION
 - 5 - DEVELOPMENT LOT NUMBER

TAX MAP
TOWNSHIP OF LOPATCONG
 WARREN COUNTY, NEW JERSEY
 SCALE 1"=100' MARCH 2000
 GLEN LLOYD, N.J.L.S. 37598

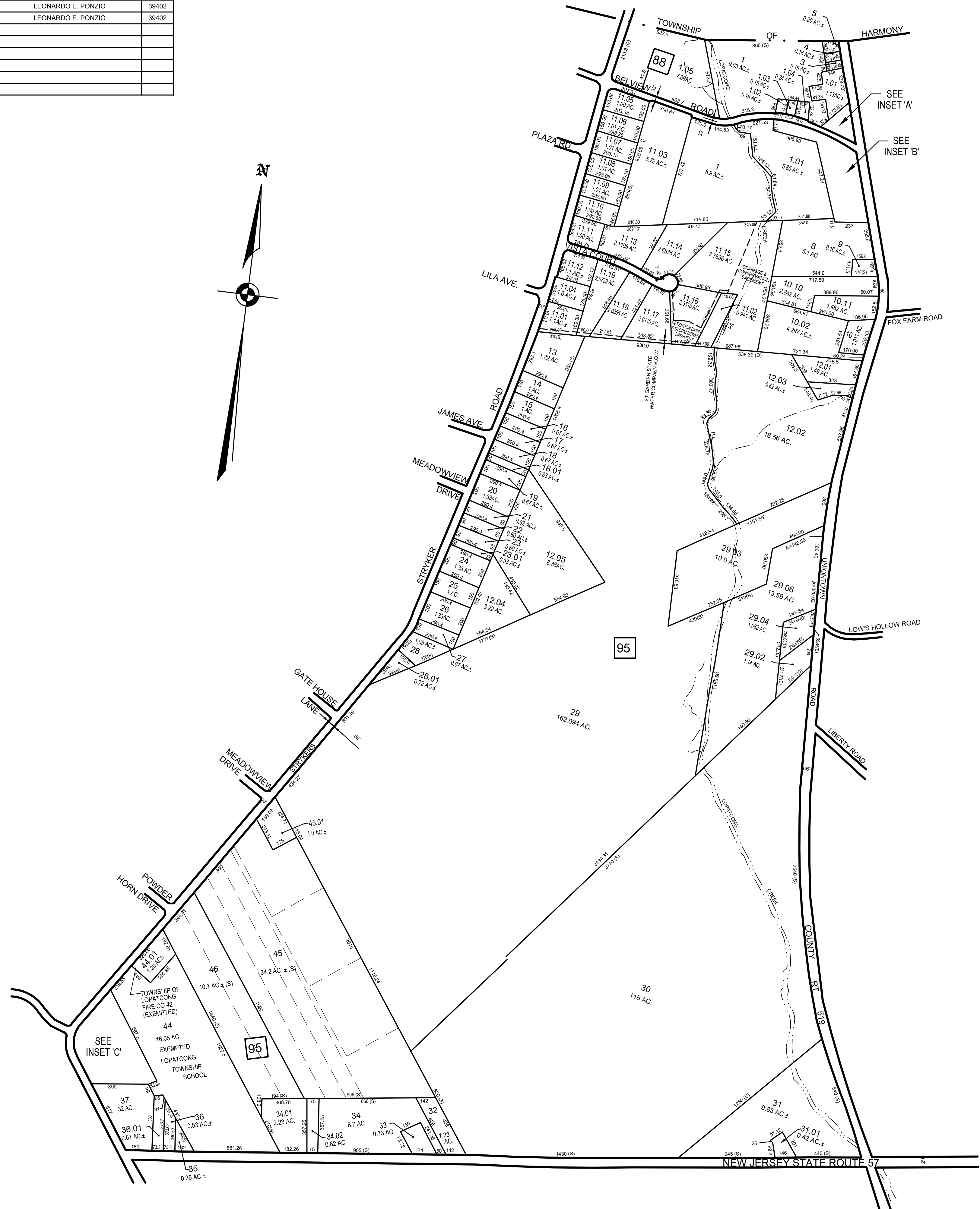
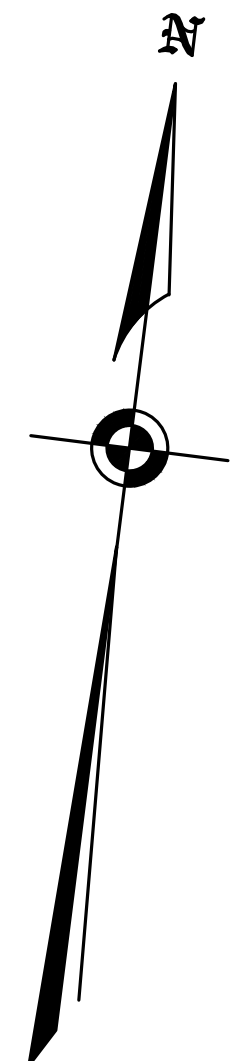
PREPARED BY
 SCHOOR DEPALMA, INC.
 550 MARSHALL STREET - PHILLIPSBURG, N.J. 08865

REVISIONS		
DATE	NAME	LIC. NO.
06-2003	LEONARDO E. PONZIO	39402
11-2003	LEONARDO E. PONZIO	39402

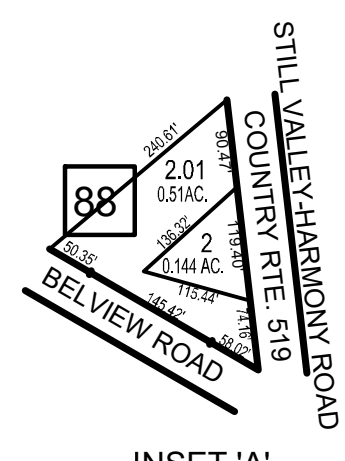
SHEET 2.07

SHEET 2.14

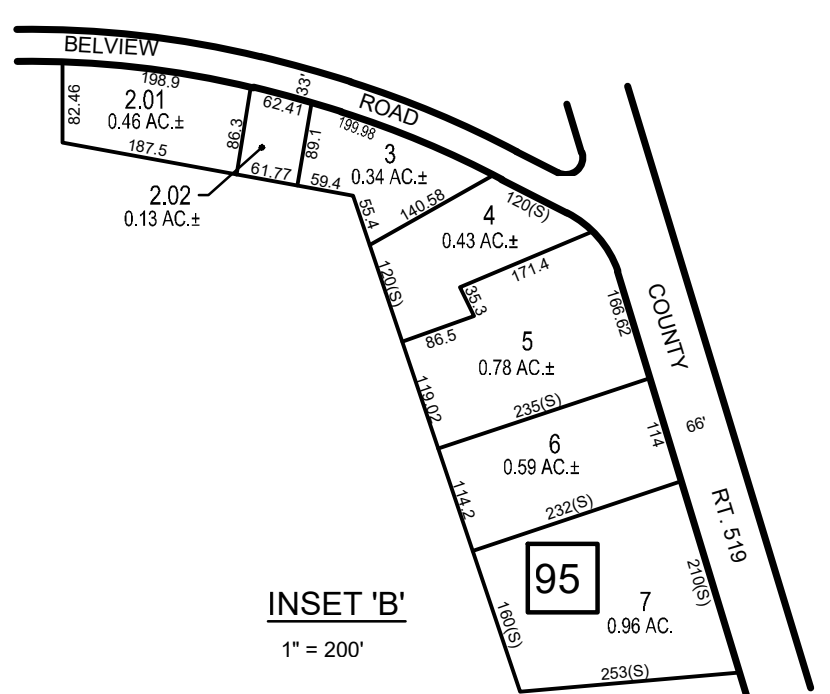
SHEET 2.10



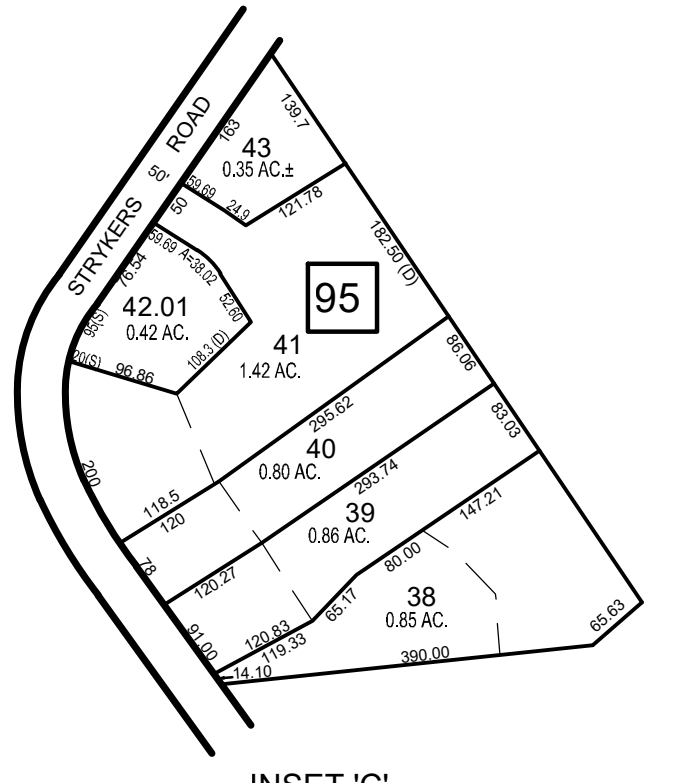
SHEET 3



INSET 'A'
1" = 200'



INSET 'B'
1" = 200'



INSET 'C'
1" = 200'

LEGEND
 1 - BLOCK NUMBER
 3 - PARCEL NUMBER
 (S) - SCALED DIMENSION
 (D) - DEED DIMENSION
 5 - DEVELOPMENT LOT NUMBER

TAX MAP
TOWNSHIP OF LOPATCONG
 WARREN COUNTY, NEW JERSEY
 SCALE 1"=400' DECEMBER 2002
 LEONARDO E. PONZIO, L.S. 39402
 MASER CONSULTING P.A.
 43A NEWBURGH ROAD SUITE 100, HACKETTSTOWN, NJ 07840